

# 展廳三

Room 3

村落建築

Architecture



建築展廳介紹谷埔村聚落與建築類型。其中聚落包括新界早期客家圍村的方形老圍、一字形的新圍與二肚，以及田心村及溪谷中的獨立宅邸。建築類型則展現了作為原型的三開間合院和聯排宅院，逐漸演變分化成六種形態過程中的連續性與多元性。同時，這也是新界客家建築近百年來，在技術變遷、家族繁衍與土地分割過程中由傳統三合院逐漸過渡到多層排屋的生動體現。在材料與建構上，谷埔建築見證了由條石青磚、夯土牆體與木椽條灰瓦頂的硬山攔檁條土木結構，逐步走向混凝土加強轉造，結合馬賽克瓷磚立面與批蕩塗料的現代化建構過程。

The architectural gallery introduces the settlement pattern and building type of Kuk Po village. These include the square-shaped Lo Wai, which represents the early Hakka walled village in the New Territories, the one-shaped San Wai and Yi Du, and the individual residences in Kuk Po valley. The building types demonstrate the continuity and diversity in the evolution of the prototypical three-bay courtyard house and townhouse, which gradually transformed into six different forms. In the meantime, it is also a vibrant manifestation of the gradual transition from traditional courtyard house to multi-story row houses in technological evolution, family expansion, and land division over the past hundred years of Hakka architectural history in the New Territories. In terms of materials and construction, the Kuk Po buildings have witnessed the modernization of the construction process from rammed earth walls and wooden rafters with a grey tile roof to concrete reinforced brick construction, combined with mosaic tile and lime plaster façade.

工作團隊：王維仁、田夢曉、徐翥、陳聿珊、蔡翊君、邱潔詩、謝方達、鄭吳峰、李慶烽、王瑞銓、陳心昊、顏紫悅

Team: Weijen Wang, Mengxiao Tian, Zhu Xu, Yushan Chen, Yijun Cai, Jessy Yau, Jonathan Xie, Chuah Hao Feng, Boris Li, Rueli Cuyan Wang, Xinhao Chen, Ziyue Yan





展廳三  
Room 3

谷埔航拍  
Drone shoot

Mount on  
Foam board  
900x2000  
900x900





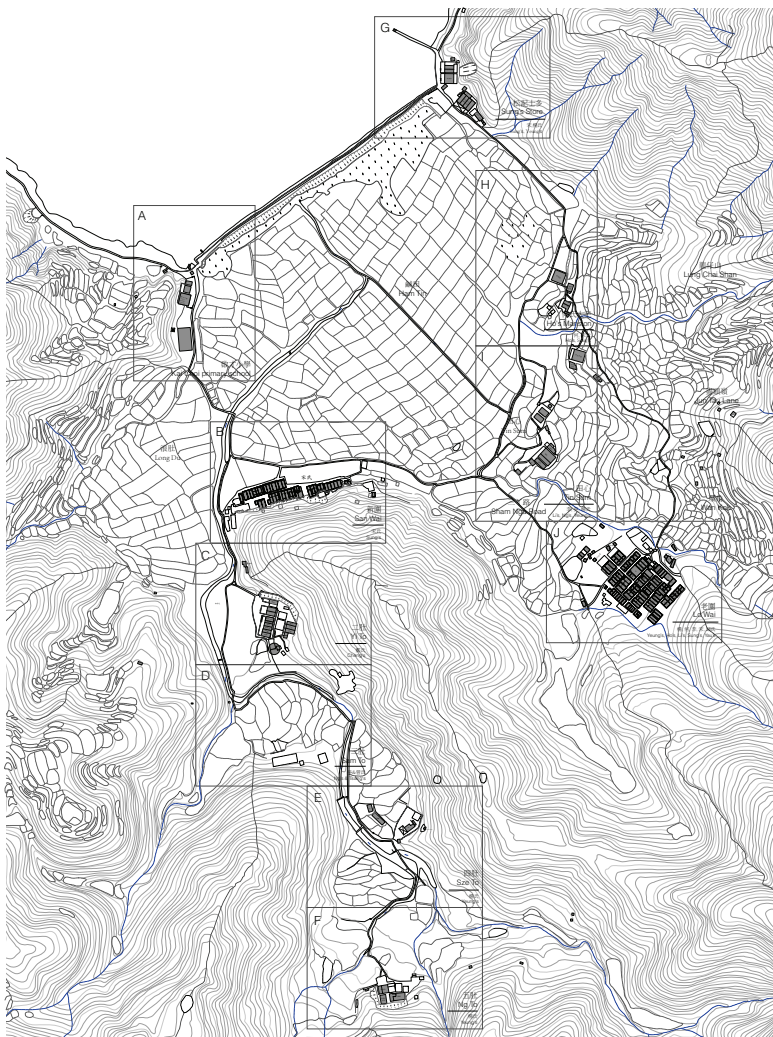




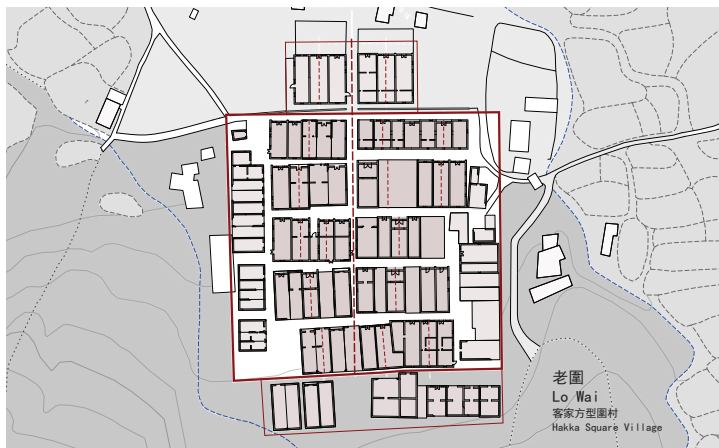
展廳三  
Room 3

老圖/新圖  
全貌  
Site  
information

Mount on  
Foam board  
850x1050



# 谷埔聚落 Village





展廳三  
Room 3

老圍全貌  
Axon:  
Lo Wai

Mount on  
Foam board  
841x1189

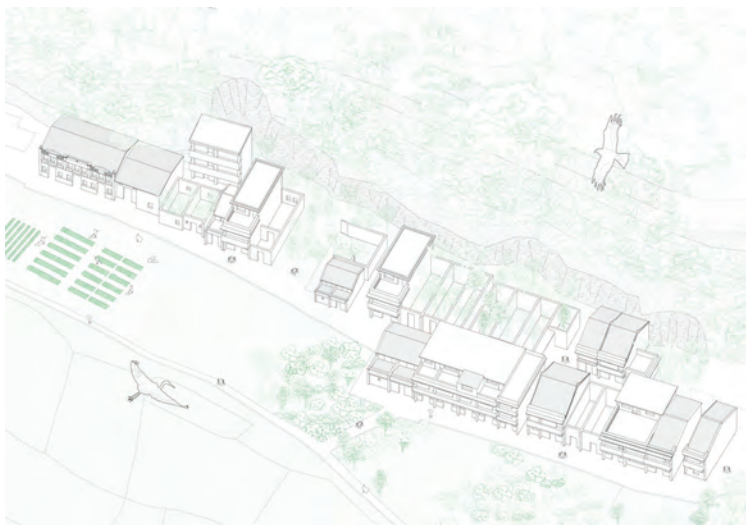




展廳三  
Room 3

新圖全貌  
Axon:  
San Wai

Mount on  
Foam board  
1189x841





晚清 late Qing  
1850

民國 rep.  
1930

1 開間  
1 modular bay

2 開間  
2 modular bay

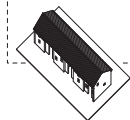
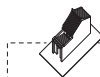
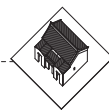
3 開間  
3 modular bay

3+1 開間  
3+1 modular bay

5 開間  
5 modular bay



原型  
prototype



延長屋面  
封閉合院  
extended roof

在三開間基礎上  
以開間為單元分割或擴充  
subdivision or addition  
of modular bay

前部發展  
平屋頂  
partial flat

合院  
courtyard



展廳三  
Room 3

谷埔村屋類型  
演化  
Village  
house  
evolution

Mount on  
Foam board  
900x610

# 建築類型 Types of House

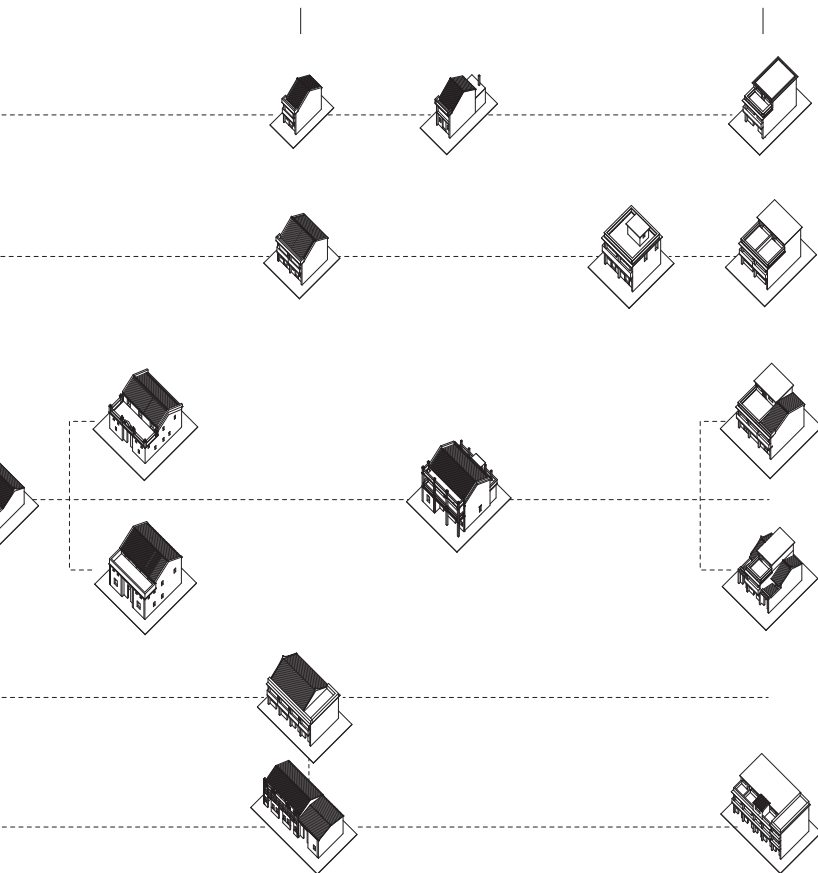
村屋類型演化

Village House Evolution

public

戰後 post-war  
1965

當代 contemporary  
1970



為  
roof

後部升高至二層  
形成二層露台  
2F balcony

整體升高至二層  
添加二層前廊  
front porch

後方擴建服務空間  
service space

發展為平屋頂  
flat roof

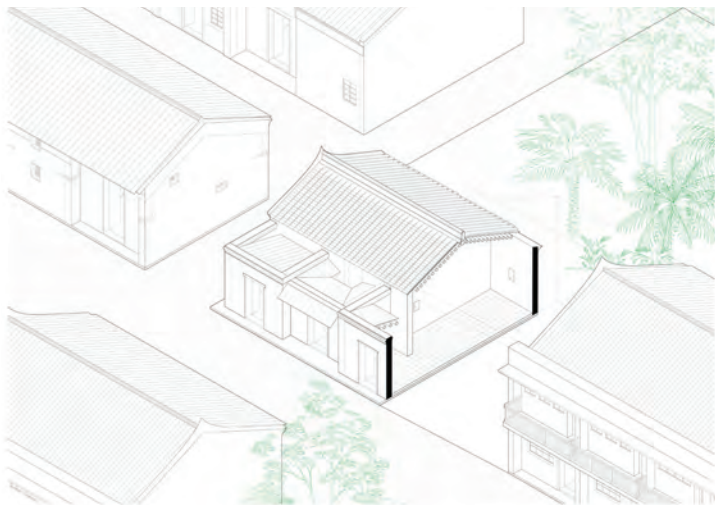
局部升高至三層  
3 levels

產權分割 land division

密度 樓層 density floor height

多層排屋

multi-storey row house



展廳三  
Room 3

老圍村屋  
Village  
house in  
Lo Wai

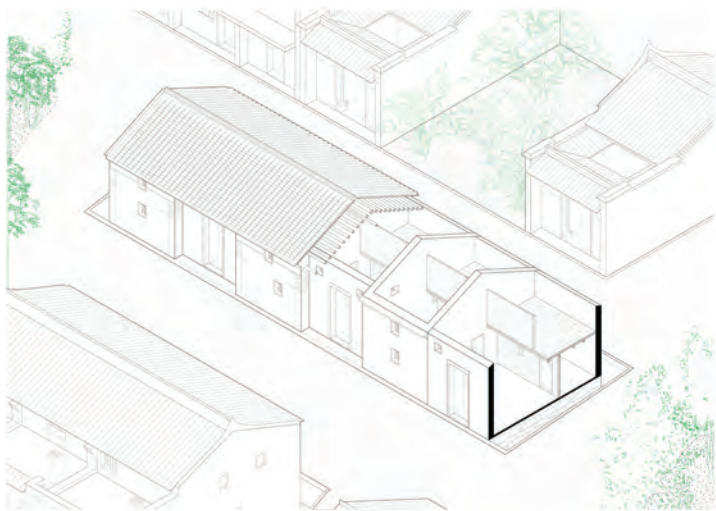
Mount on  
Foam board  
850x1050



老圍  
李氏

材料：磚石青磚結  
合夯土牆體，與木  
樓加磚子架及瓦面  
的硬山兩層構造。

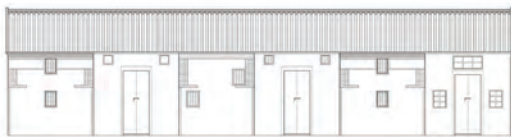




展廳三  
Room 3

老圍村屋  
Village  
house in  
Lo Wai

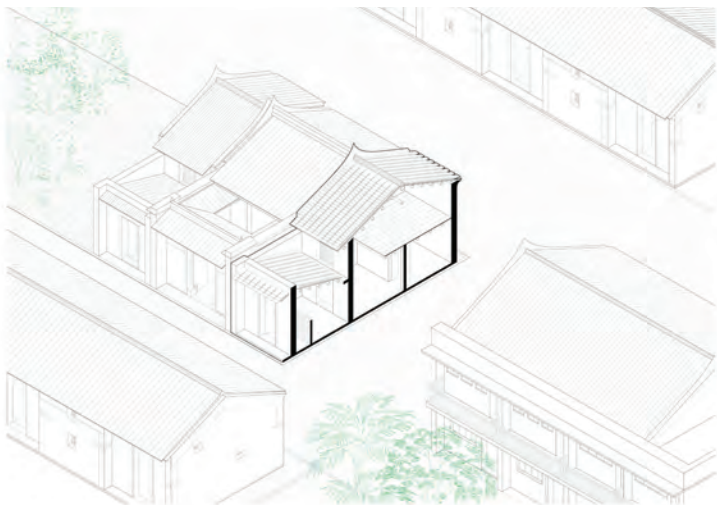
Mount on  
Foam board  
850x1050



老圍

李氏

材料：綠石膏磚黏合青土牆體，與木  
橫加棧子圍表正頂的硬山兩樣構造。



展廳三  
Room 3

老圍村屋  
Village  
house in  
Lo Wai

Mount on  
Foam board  
850x1050

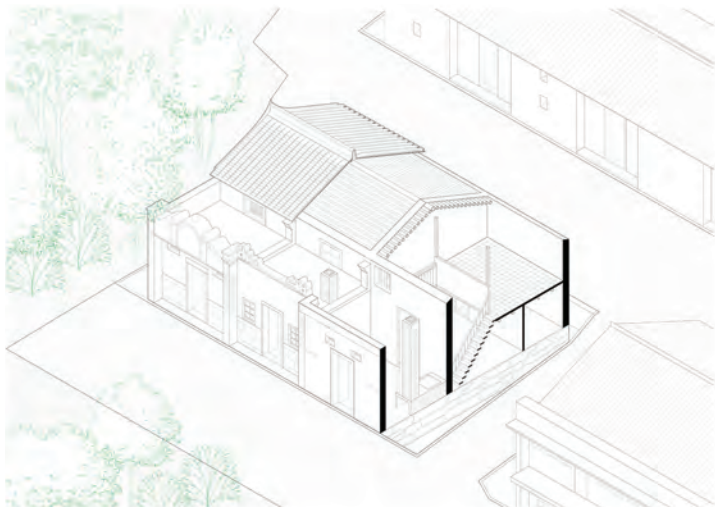


老圍  
宋氏

材料：鑽石青磚鋪  
合外土牆壁，圓木  
樑加緣子增加瓦當  
的硬山筒樑構造。







展廳三  
Room 3

老圍村屋  
Village  
house in  
Lo Wai

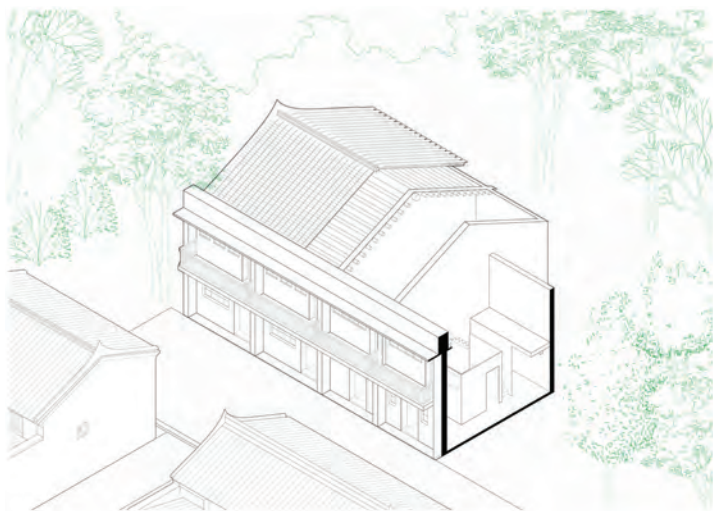
Mount on  
Foam board  
850x1050



老圍  
林氏兄弟

材料：條石青磚貼  
合旁土牆壁，與木  
樓架條子及灰泥  
的樓山兩樓構造。





展廳三  
Room 3

老圍村屋  
Village  
house in  
Lo Wai

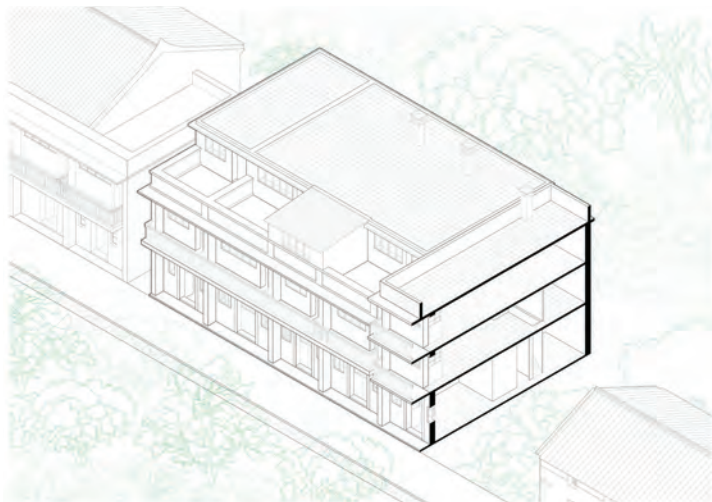
Mount on  
Foam board  
850x1050



老圍  
宋氏

材料：混凝土加磚  
構造，結合金屬  
結構和輕便材料  
的現代化構造。

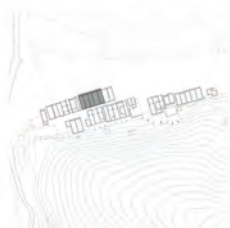
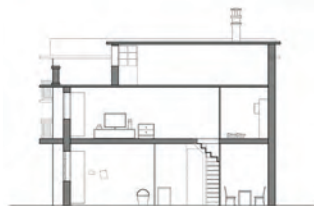




展廳三  
Room 3

新圍村屋  
Village  
house in  
San Wai

Mount on  
Foam board  
850x1050



新圍  
宋氏

材料：雲石土加磚  
構造，結合金屬  
玻璃和塑膠材料的  
現代化構造。

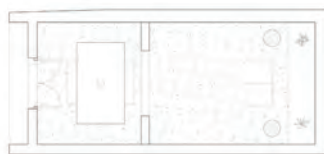
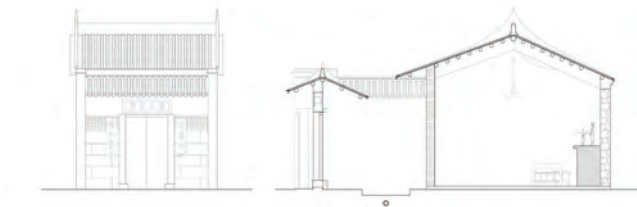
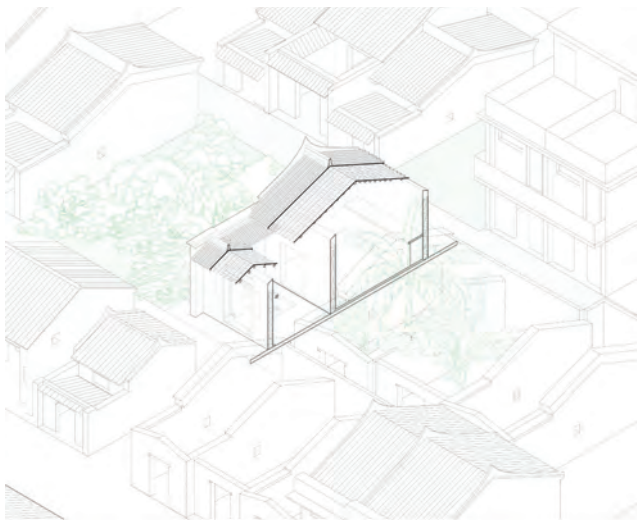




展廳三  
Room 3

老圍宗祠  
Ancestral  
Hall in  
Lo Wai

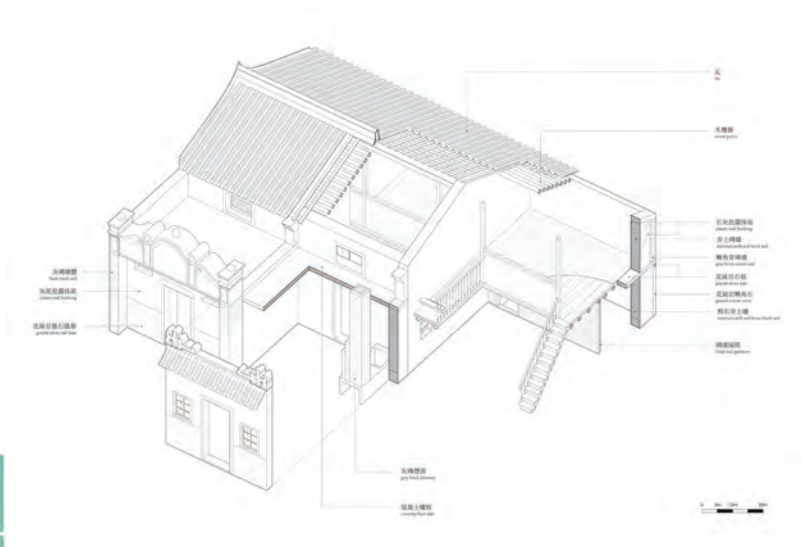
Mount on  
Foam board  
590 x 1050



老圍

楊氏宗祠

材料：條石青磚結合夯土牆壁，與木樓加綠子藤灰瓦蓋的硬山兩坡構造。



展廳三  
Room 3

村屋建築物料  
Village  
house  
construction  
material

Mount on  
Foam board  
850x1050







1965



1968

芳馨桂齋





























