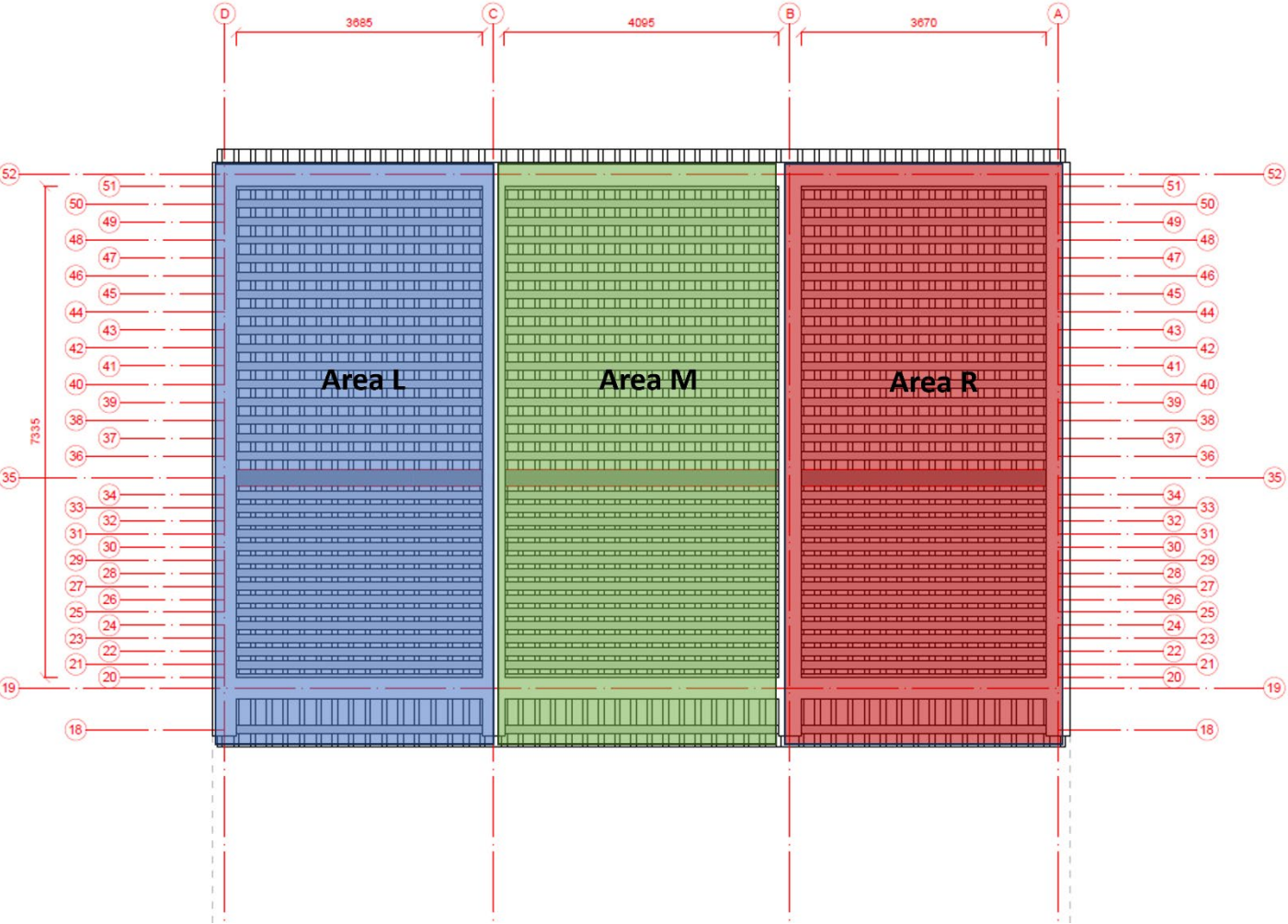



Method of Condition Survey

Project	Restoration Works of Lee Mansion at DD54 Lots 258, 262, 263 and 393, Kuk Po, Sha Tau Kok, N.T.
Location	Lee Mansion at DD54 Lots 258, 262, 263 and 393, Kuk Po, Sha Tau Kok, N.T.
Surveyed Item	All purlins (The area observed on the bottom is marked as P with purlin number. The Area observed after removal of roof tile is marked as Pt with purlin number, as t refers to the top of the purlin.)
Objective of Survey	<ul style="list-style-type: none"> ● Identify the locations and extent of cracks and other defects. ● For make good the defective substrate
Methodology of Plaster Condition Survey	<p>(1) Visual Inspection</p> <ul style="list-style-type: none"> ● Observable crack ● Holes <p>(2) Recording</p> <ul style="list-style-type: none"> ● Take photos of defective areas.
Conclusion of condition	Most of the purlins were found with hairline cracks, and repair works are recommended. Severe cracks were found on the purlin's top and bottom, which are recommended to be replaced. No rotten was found. No rotted parts were found on the surface of Purlin No. 18 in 3 areas, but there were signs of insect infestation, which was also recommended for replacement.

Reflected Ceiling Plan



Survey before the removal of roof tiles

Purlins									
Photo of Defects									
									
Area	R	Location	P21-a	Length	1500	mm	Width	>5	mm
									
Area	R	Location	P21-b	Length	1500	mm	Width	<5	mm

Purlins

Photo of Defects



Area	R	Location	P23	Length	1000	mm	Width	<5	mm
------	---	----------	-----	--------	------	----	-------	----	----



Area	R	Location	P26	Length	700	mm	Width	<5	mm
------	---	----------	-----	--------	-----	----	-------	----	----

Purlins

Photo of Defects



Area	R	Location	P27	Length	550	mm	Width	<5	mm
------	---	----------	-----	--------	-----	----	-------	----	----



Area	R	Location	P28	Length	750	mm	Width	<5	mm
------	---	----------	-----	--------	-----	----	-------	----	----

Purlins

Photo of Defects



Area	R	Location	P29	Length	2750	mm	Width	<5	mm
------	---	----------	-----	--------	------	----	-------	----	----

Purlins									
Photo of Defects									
									
									
Area	R	Location	P30	Length	3500	mm	Width	<5	mm

Purlins

Photo of Defects



Area	R	Location	P31	Length	500	mm	Width	<5	mm
------	---	----------	-----	--------	-----	----	-------	----	----

Purlins

Photo of Defects



Area	R	Location	P33	Length	3500	mm	Width	5	mm
------	---	----------	-----	--------	------	----	-------	---	----

Purlins

Photo of Defects



Area	R	Location	P35-a	Length	2250	mm	Width	<5	mm
------	---	----------	-------	--------	------	----	-------	----	----



Area	R	Location	P35-b	Length	1500	mm	Width	<5	mm
------	---	----------	-------	--------	------	----	-------	----	----

Purlins									
Photo of Defects									
									
									
Area	R	Location	P38	Length	3250	mm	Width	5	mm

Purlins

Photo of Defects



Area	R	Location	P39-a	Length	1500	mm	Width	<5	mm
------	---	----------	-------	--------	------	----	-------	----	----



Area	R	Location	P39-b	Length	750	mm	Width	<5	mm
------	---	----------	-------	--------	-----	----	-------	----	----

Purlins									
Photo of Defects									
									
									
Area	R	Location	P40	Length	3000	mm	Width	<5	mm


Purlins									
Photo of Defects									
									
									
Area	R	Location	P45	Length	2000	mm	Width	<5	mm

Purlins

Photo of Defects



Area	R	Location	P47	Length	3750	mm	Width	5	mm
------	---	----------	-----	--------	------	----	-------	---	----

Purlins									
Photo of Defects									
									
Area	M	Location	P20	Length	2750	mm	Width	<5	mm

Purlins

Photo of Defects



Area	M	Location	P23-a	Length	500	mm	Width	<5	mm
------	---	----------	-------	--------	-----	----	-------	----	----



Area	M	Location	P23-b	Length	1500	mm	Width	<5	mm
------	---	----------	-------	--------	------	----	-------	----	----

Purlins

Photo of Defects



Area	M	Location	P26	Length	2000	mm	Width	<5	mm
------	---	----------	-----	--------	------	----	-------	----	----



Area	M	Location	P27	Length	2000	mm	Width	<5	mm
------	---	----------	-----	--------	------	----	-------	----	----

Purlins

Photo of Defects



Area	M	Location	P30	Length	2750	mm	Width	>5	mm
------	---	----------	-----	--------	------	----	-------	----	----



Area	M	Location	P31	Length	1250	mm	Width	<5	mm
------	---	----------	-----	--------	------	----	-------	----	----

Purlins

Photo of Defects



Area	M	Location	P35	Length	3250	mm	Width	<5	mm
------	---	----------	-----	--------	------	----	-------	----	----

Purlins

Photo of Defects



Area	M	Location	P36	Length	1750	mm	Width	<5	mm
------	---	----------	-----	--------	------	----	-------	----	----



Area	M	Location	P37	Length	1750	mm	Width	<5	mm
------	---	----------	-----	--------	------	----	-------	----	----

Purlins

Photo of Defects



Area	M	Location	P38	Length	1750	mm	Width	<5	mm
------	---	----------	-----	--------	------	----	-------	----	----



Area	M	Location	P39	Length	1000	mm	Width	<5	mm
------	---	----------	-----	--------	------	----	-------	----	----

Purlins

Photo of Defects



Area	M	Location	P40	Length	2250	mm	Width	<5	mm
------	---	----------	-----	--------	------	----	-------	----	----

Purlins

Photo of Defects



Area	M	Location	P44	Length	2250	mm	Width	<5	mm
------	---	----------	-----	--------	------	----	-------	----	----

Purlins

Photo of Defects



Area	M	Location	P50	Length	4250	mm	Width	5	mm
------	---	----------	-----	--------	------	----	-------	---	----

Purlins

Photo of Defects



Area	M	Location	P51-a	Length	1250	mm	Width	<5	mm
------	---	----------	-------	--------	------	----	-------	----	----



Area	M	Location	P51-b	Length	500	mm	Width	<5	mm
------	---	----------	-------	--------	-----	----	-------	----	----

Purlins

Photo of Defects



Area	L	Location	P23-a	Length	1000	mm	Width	<5	mm
------	---	----------	-------	--------	------	----	-------	----	----



Area	L	Location	P23-b	Length	750	mm	Width	<5	mm
------	---	----------	-------	--------	-----	----	-------	----	----

Purlins

Photo of Defects



Area	L	Location	P24-a	Length	350	mm	Width	<5	mm
------	---	----------	-------	--------	-----	----	-------	----	----



Area	L	Location	P24-b	Length	1500	mm	Width	<5	mm
------	---	----------	-------	--------	------	----	-------	----	----

Purlins

Photo of Defects



Area	L	Location	P26	Length	1250	mm	Width	<5	mm
------	---	----------	-----	--------	------	----	-------	----	----



Area	L	Location	P29	Length	1000	mm	Width	<5	mm
------	---	----------	-----	--------	------	----	-------	----	----

Purlins

Photo of Defects



Area	L	Location	P30	Length	750	mm	Width	5	mm
------	---	----------	-----	--------	-----	----	-------	---	----



Area	L	Location	P31	Length	3000	mm	Width	5	mm
------	---	----------	-----	--------	------	----	-------	---	----

Purlins

Photo of Defects



Area	L	Location	P31	Length	3000	mm	Width	5	mm
------	---	----------	-----	--------	------	----	-------	---	----

Purlins

Photo of Defects



Area	L	Location	P33	Length	750	mm	Width	<5	mm
------	---	----------	-----	--------	-----	----	-------	----	----



Area	L	Location	P34	Length	1250	mm	Width	<5	mm
------	---	----------	-----	--------	------	----	-------	----	----

Purlins

Photo of Defects



Area	L	Location	P35	Length	2500	mm	Width	<5	mm
------	---	----------	-----	--------	------	----	-------	----	----

Purlins

Photo of Defects



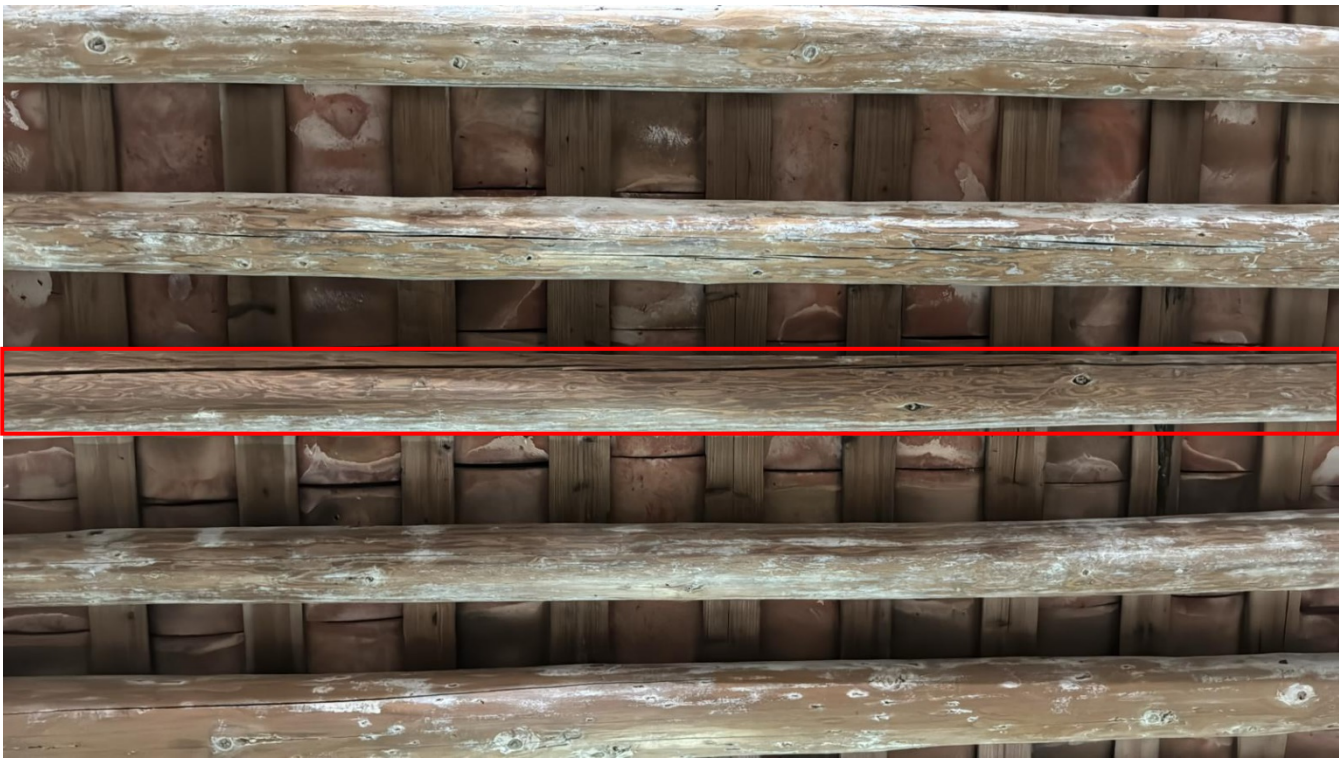
Area	L	Location	P39	Length	1250	mm	Width	<5	mm
------	---	----------	-----	--------	------	----	-------	----	----



Area	L	Location	P41	Length	3000	mm	Width	5	mm
------	---	----------	-----	--------	------	----	-------	---	----

Purlins

Photo of Defects



Area	L	Location	P41	Length	3000	mm	Width	5	mm
------	---	----------	-----	--------	------	----	-------	---	----

Purlins

Photo of Defects



Area	L	Location	P42	Length	1750	mm	Width	5	mm
------	---	----------	-----	--------	------	----	-------	---	----



Area	L	Location	P43	Length		mm	Width	10	mm
------	---	----------	-----	--------	--	----	-------	----	----

Purlins

Photo of Defects



Area	L	Location	P44	Length	2000	mm	Width	5	mm
------	---	----------	-----	--------	------	----	-------	---	----



Area	L	Location	P46	Length	1500	mm	Width	<5	mm
------	---	----------	-----	--------	------	----	-------	----	----

Purlins

Photo of Defects



Area	L	Location	P47-a	Length	1250	mm	Width	<5	mm
------	---	----------	-------	--------	------	----	-------	----	----



Area	L	Location	P47-b	Length	1000	mm	Width	<5	mm
------	---	----------	-------	--------	------	----	-------	----	----

Purlins

Photo of Defects



Area	L	Location	P48	Length	750	mm	Width	<5	mm
------	---	----------	-----	--------	-----	----	-------	----	----

Purlins

Photo of Defects




Area	L	Location	P49-a	Length	1250	mm	Width	<5	mm
------	---	----------	-------	--------	------	----	-------	----	----



Area	L	Location	P49-b	Length	2000	mm	Width	<5	mm
------	---	----------	-------	--------	------	----	-------	----	----

Survey after the removal of roof tiles

Purlins									
Photo of Defects									
<div><div><div>18</div><div>19</div><div>Pt18</div></div></div>									
Area	L	Location	Pt18	Length	1000	mm	Width	<5	mm

Remarks: Insect bites are found on L-P18, replacement of the purlin R-P18 is proposed as there is potential risk.

Purlins

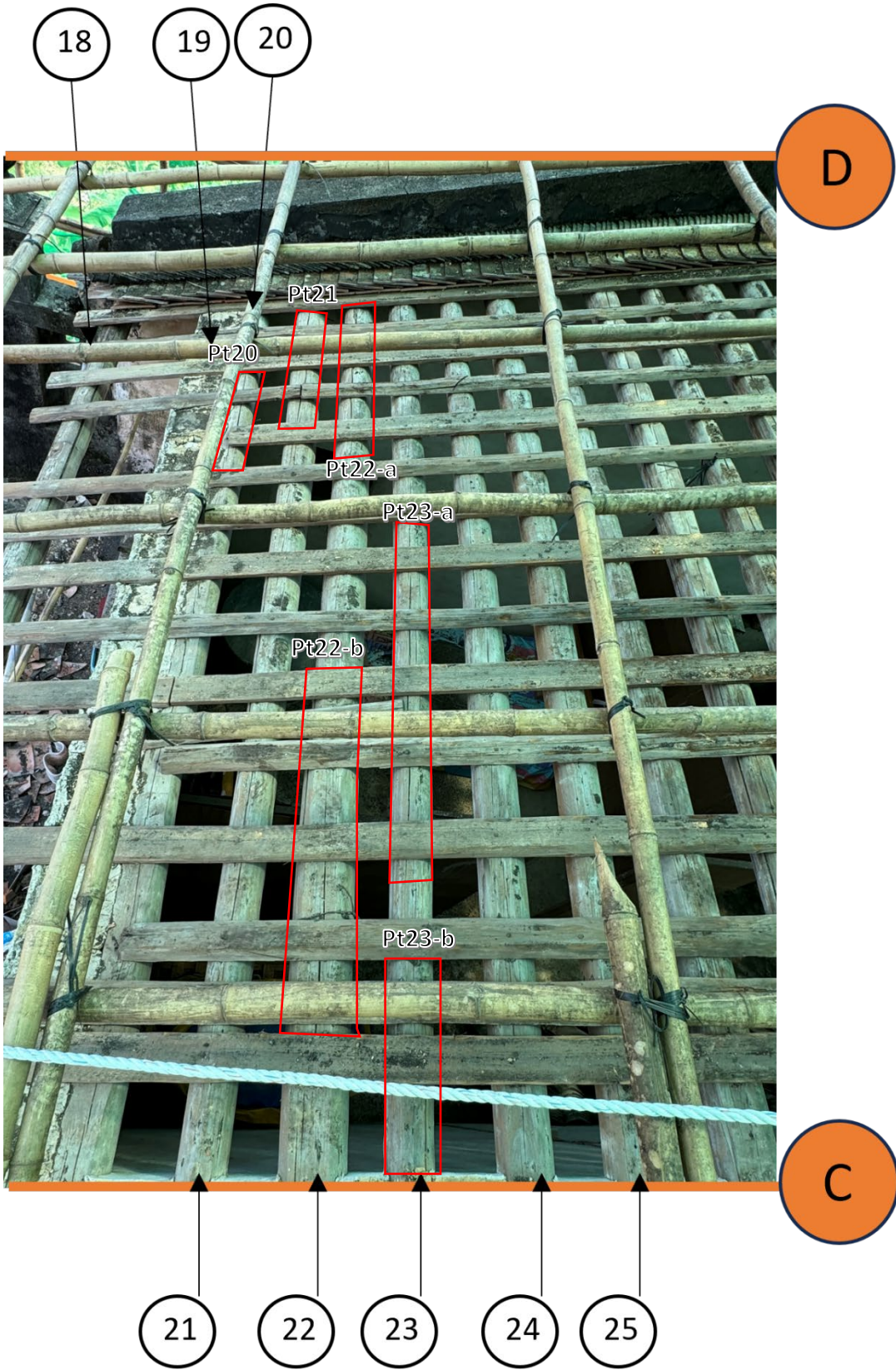
Photo of Defects



Area	L	Location	Pt20	Length	600	mm	Width	<5	mm
Area	L	Location	Pt21	Length	850	mm	Width	<5	mm
Area	L	Location	Pt22-a	Length	1300	mm	Width	<5	mm
Area	L	Location	Pt22-b	Length	1000	mm	Width	<5	mm

Purlins

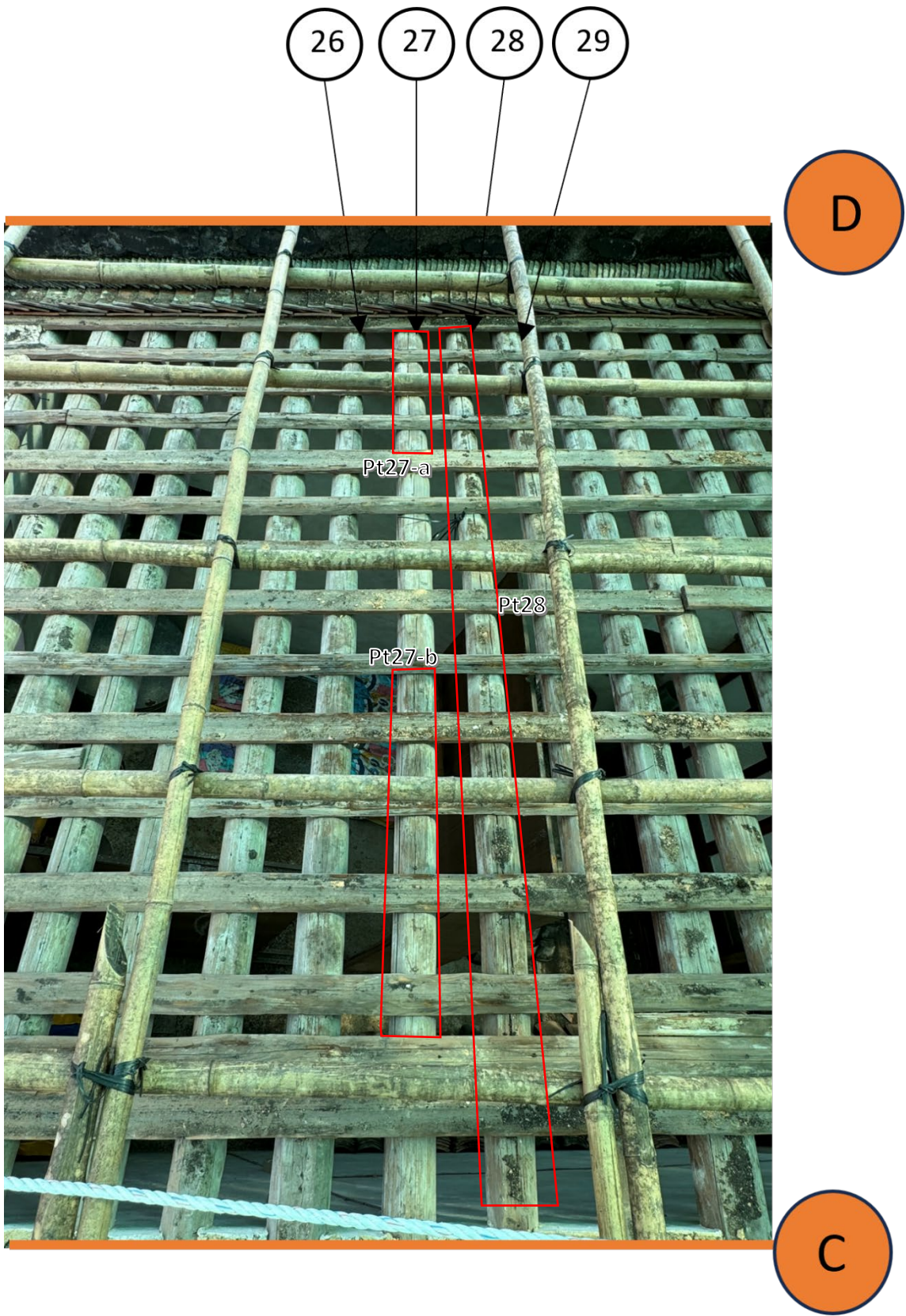
Photo of Defects



Area	L	Location	Pt23-a	Length	1250	mm	Width	<5	mm
Area	L	Location	Pt23-b	Length	500	mm	Width	<5	mm

Purlins

Photo of Defects



Area	L	Location	Pt27-a	Length	1000	mm	Width	<5	mm
Area	L	Location	Pt27-b	Length	1100	mm	Width	<5	mm
Area	L	Location	Pt28	Length	3500	mm	Width	<5	mm

Purlins

Photo of Defects



Area	L	Location	Pt32	Length	1000	mm	Width	<5	mm
Area	L	Location	Pt34-a	Length	750	mm	Width	<5	mm
Area	L	Location	Pt34-b	Length	1800	mm	Width	<5	mm

D



C

36

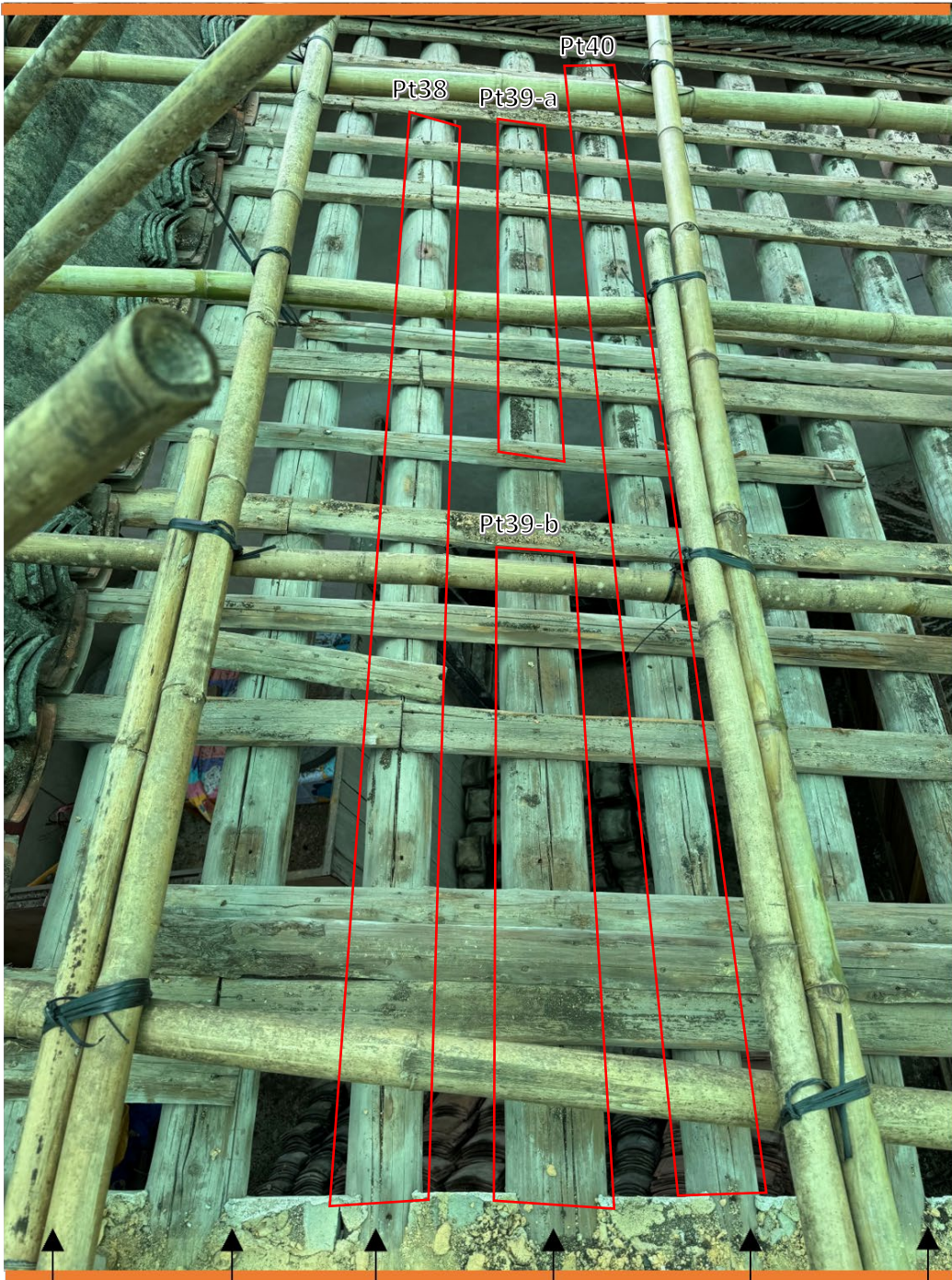
37

38

39

Area	L	Location	Pt36	Length	1000	mm	Width	<5	mm
Area	L	Location	Pt37	Length	2000	mm	Width	<5	mm

D



C

36

37

38

39

40

41

Area	L	Location	Pt38	Length	3250	mm	Width	<5	mm
Area	L	Location	Pt39-a	Length	1250	mm	Width	<5	mm
Area	L	Location	Pt39-b	Length	1250	mm	Width	<5	mm
Area	L	Location	Pt40	Length	3500	mm	Width	<5	mm

Purlins

Photo of Defects

D



C

Area	L	Location	Pt41-a	Length	2250	mm	Width	<5	mm
Area	L	Location	Pt41-b	Length	750	mm	Width	<5	mm
Area	L	Location	Pt43	Length	1250	mm	Width	<5	mm

D



C

44

45

46

47

48

Area	L	Location	Pt44	Length	2500	mm	Width	<5	mm
Area	L	Location	Pt45	Length	2000	mm	Width	<5	mm
Area	L	Location	Pt47	Length	1000	mm	Width	<5	mm

Purlins

Photo of Defects

D



C

Area	L	Location	Pt48	Length	3000	mm	Width	<5	mm
Area	L	Location	Pt50	Length	3500	mm	Width	<5	mm

B

18

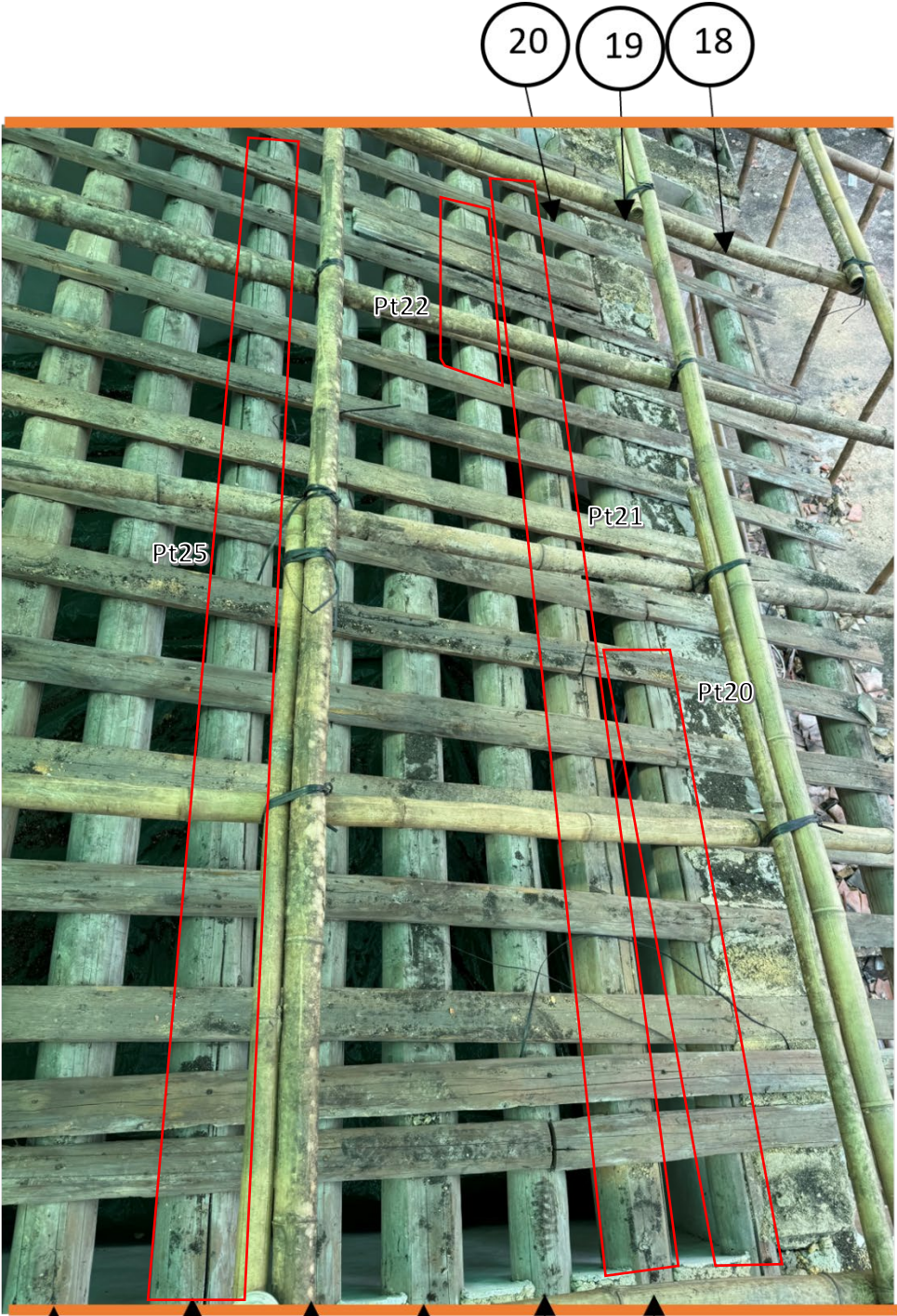


C

Area	M	Location	Pt18	Length	3800	mm	Width	<5	mm
------	---	----------	------	--------	------	----	-------	----	----

Remarks: Insect bites are found on R-P18, replacement of the purlin M-P18 is proposed as there is potential risk.

B



C

Area	M	Location	Pt20	Length	1500	mm	Width	<5	mm
Area	M	Location	Pt21	Length	3800	mm	Width	<5	mm
Area	M	Location	Pt22	Length	800	mm	Width	<5	mm
Area	M	Location	Pt25	Length	3800	mm	Width	<5	mm

Purlins

Photo of Defects

B



C

Area	M	Location	Pt26	Length	3800	mm	Width	<5	mm
------	---	----------	------	--------	------	----	-------	----	----

Purlins

Photo of Defects

B



C

Area	M	Location	Pt29	Length	2500	mm	Width	<5	mm
Area	M	Location	Pt31	Length	1000	mm	Width	<5	mm
Area	M	Location	Pt32-a	Length	2000	mm	Width	<5	mm
Area	M	Location	Pt32-b	Length	1500	mm	Width	<5	mm

Purlins

Photo of Defects

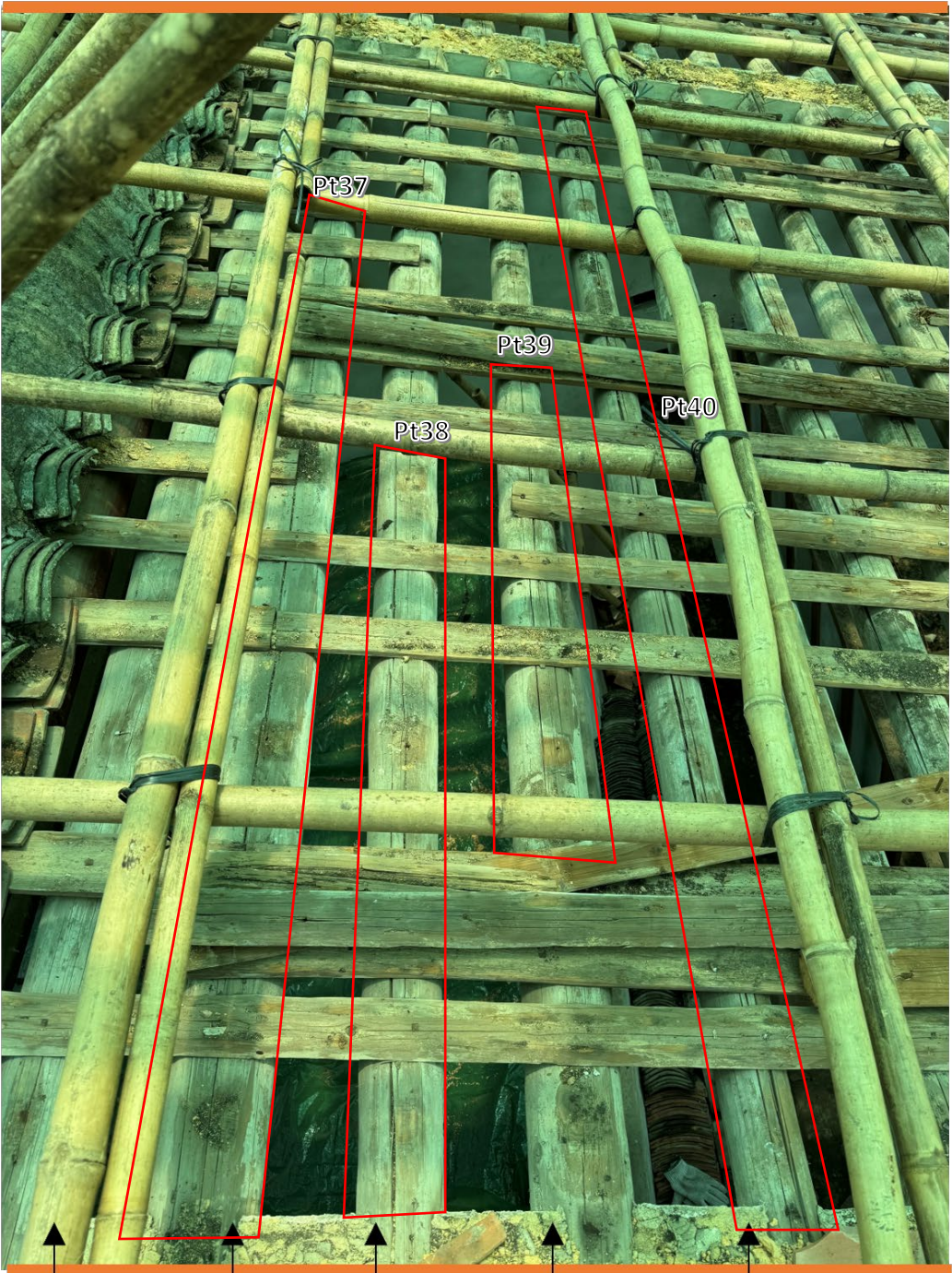
B



C

Area	M	Location	Pt33-a	Length	750	mm	Width	<5	mm
Area	M	Location	Pt33-b	Length	1250	mm	Width	<5	mm
Area	M	Location	Pt34	Length	2800	mm	Width	<5	mm

C



B

36

37

38

39

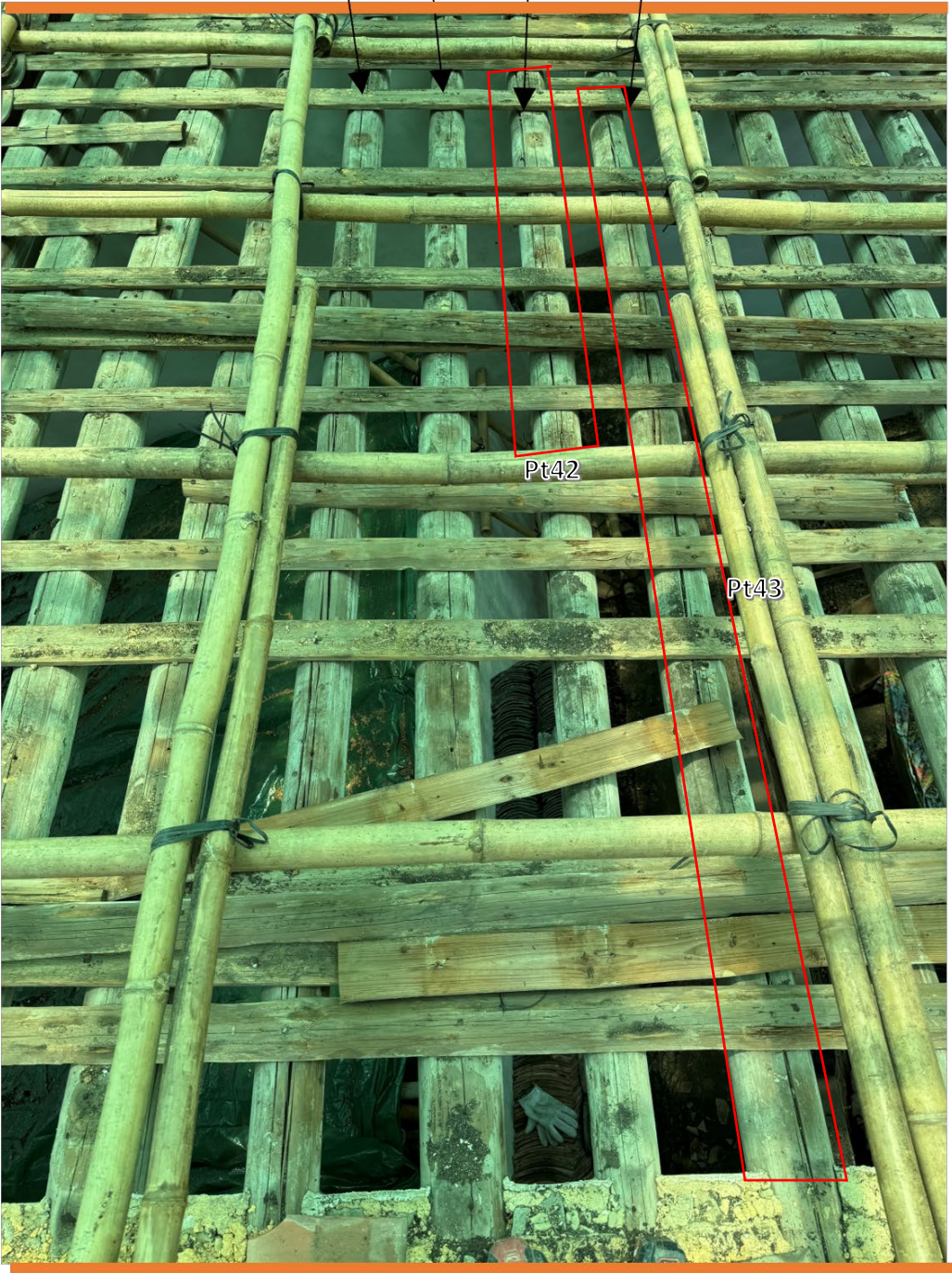
40

Area	M	Location	Pt37	Length	3000	mm	Width	<5	mm
Area	M	Location	Pt38	Length	1500	mm	Width	<5	mm
Area	M	Location	Pt39	Length	1250	mm	Width	<5	mm
Area	M	Location	Pt40	Length	3800	mm	Width	<5	mm

Purlins

Photo of Defects

C



B

Area	M	Location	Pt42	Length	1250	mm	Width	<5	mm
Area	M	Location	Pt43	Length	3800	mm	Width	<5	mm

C



B

43

44

45

46

47

Area	M	Location	Pt44	Length	500	mm	Width	<5	mm
Area	M	Location	Pt46	Length	3800	mm	Width	<5	mm

Purlins

Photo of Defects

C

47 48 49 50 51



B

Area	M	Location	Pt47	Length	750	mm	Width	<5	mm
------	---	----------	------	--------	-----	----	-------	----	----

Purlins

Photo of Defects

A

21 20 19 18



B

Area

R

Location

Pt18

Length

3500

mm

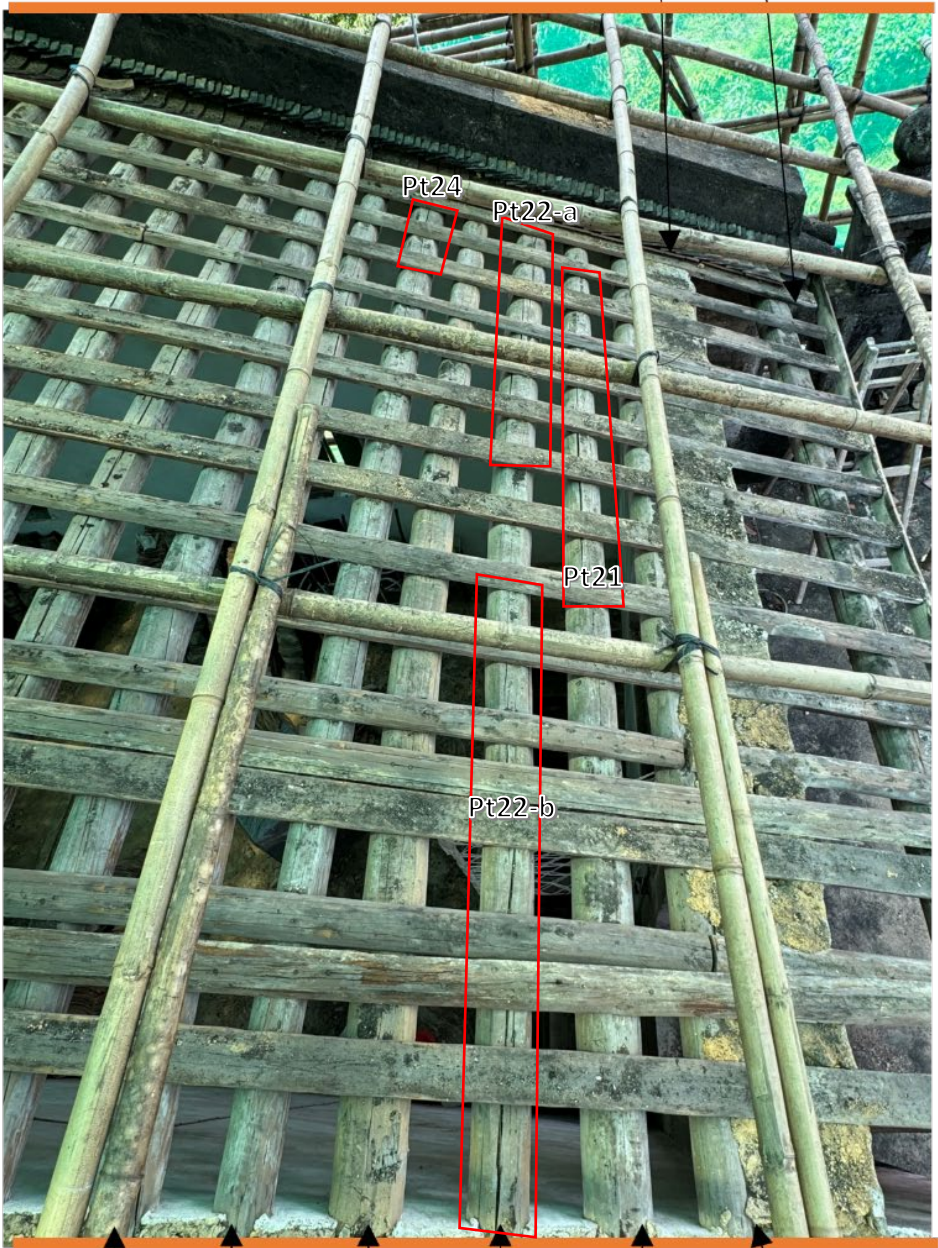
Width

<5

mm

Remarks: Insect bites are found on R-P18, replacement of the purlin R-P18 is proposed as there is potential risk.

A



B

Area	R	Location	Pt21	Length	1250	mm	Width	<5	mm
Area	R	Location	Pt22-a	Length	1250	mm	Width	<5	mm
Area	R	Location	Pt22-b	Length	1500	mm	Width	<5	mm
Area	R	Location	Pt24	Length	500	mm	Width	<5	mm

A



B

29

28

27

26

25

Area	R	Location	Pt25	Length	1500	mm	Width	<5	mm
Area	R	Location	Pt27	Length	2250	mm	Width	<5	mm
Area	R	Location	Pt28	Length	750	mm	Width	<5	mm
Area	R	Location	Pt29	Length	750	mm	Width	<5	mm

Purlins

Photo of Defects

A



B

31

30

Area

R

Location

Pt32

Length

3500

mm

Width

<5

mm

A



B

40

39

38

37

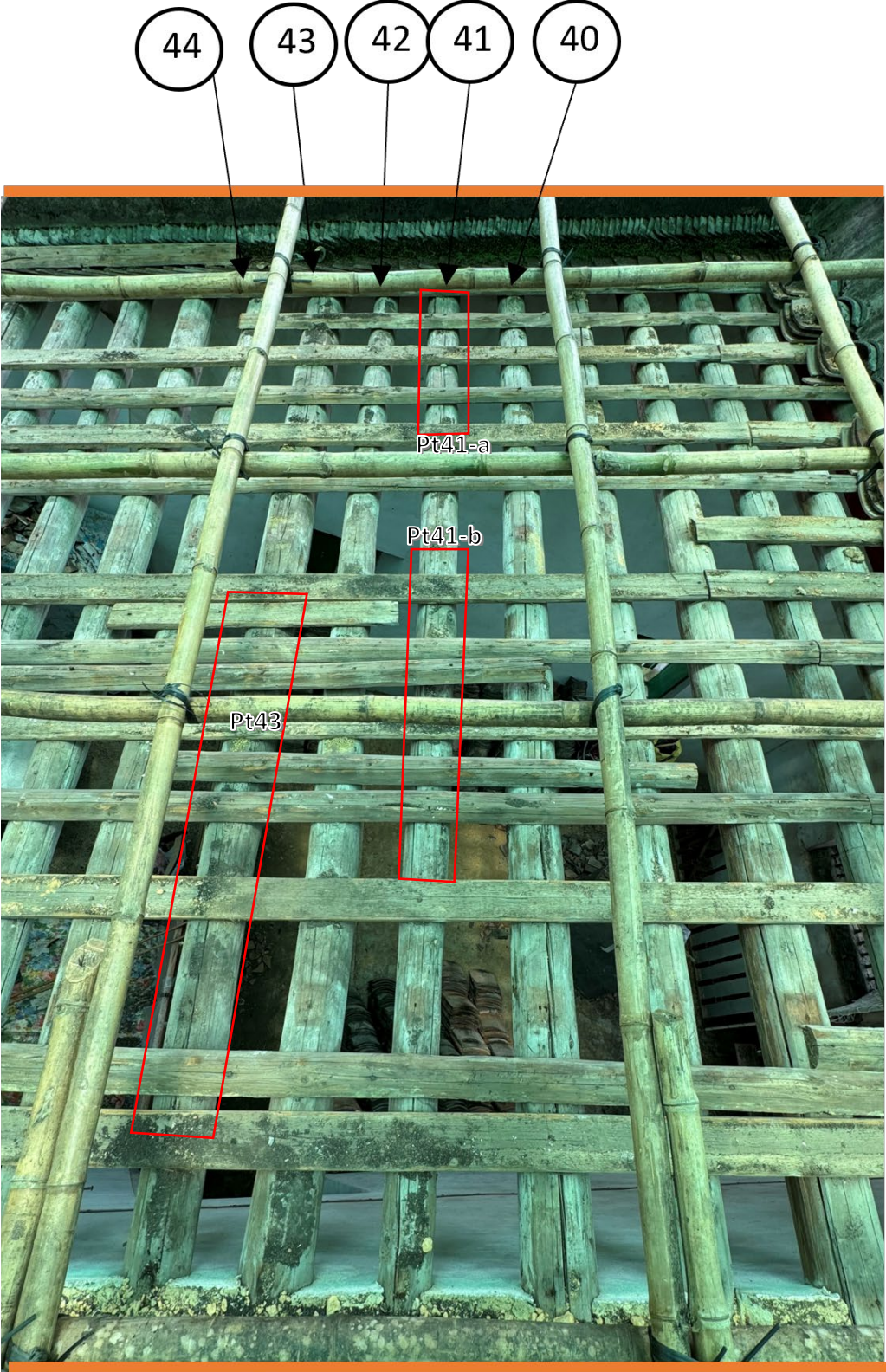
36

Area	R	Location	Pt39	Length	750	mm	Width	<5	mm
Area	R	Location	Pt40	Length	2250	mm	Width	<5	mm

Purlins

Photo of Defects

A



B

Area	R	Location	Pt41-a	Length	1000	mm	Width	<5	mm
Area	R	Location	Pt41-b	Length	1000	mm	Width	<5	mm
Area	R	Location	Pt43	Length	1000	mm	Width	<5	mm

Purlins

Photo of Defects

A



B

48

47

46

45

44

43

Area

R

Location

Pt48

Length

3000

mm

Width

<5

mm

Purlins

Photo of Defects

A

51



B

50

49

48

47

46

Area

R

Location

Pt51

Length

2000

mm

Width

<5

mm

Conclusion

Most of the purlins were found with hairline cracks, and repair works are recommended. Severe cracks were found on the purlin's top and bottom, which are recommended to be replaced. No rotten was found. No rotted parts were found on the surface of Purlin No. 18 in 3 areas, but there were signs of insect infestation, which was also recommended for replacement.

After survey, we would like to recommend that the following proposal for 3 different situations:

- ✧ For cracks are <5mm width, repair with wood adhesive.
- ✧ For cracks are 5 or > 5mm width, repair with sawdust and wood adhesive.
- ✧ For purlin with severe cracks found on the top and bottom and purlin with insect bites, replace the existing purlin with new purlin.

Area	Location	Length	mm	Width	mm	Proposal treatment
R	Pt18	3500	mm	<5	mm	Replace with new purlin
	P21-a	1500	mm	>5	mm	Repair with sawdust
	P21-b	1500	mm	<5	mm	Repair with wood adhesive
	Pt21	1250	mm	<5	mm	Repair with wood adhesive
	Pt22-a	1250	mm	<5	mm	Repair with wood adhesive
	Pt22-b	1500	mm	<5	mm	Repair with wood adhesive
	P23	1000	mm	<5	mm	Repair with wood adhesive
	Pt24	500	mm	<5	mm	Repair with wood adhesive
	Pt25	1500	mm	<5	mm	Repair with wood adhesive
	P26	700	mm	<5	mm	Repair with wood adhesive
	P27	550	mm	<5	mm	Repair with wood adhesive
	Pt27	2250	mm	<5	mm	Repair with wood adhesive
	P28	750	mm	<5	mm	Repair with wood adhesive
	Pt28	750	mm	<5	mm	Repair with wood adhesive
	P29	2750	mm	<5	mm	Repair with wood adhesive
	Pt29	750	mm	<5	mm	Repair with wood adhesive
	P30	3500	mm	<5	mm	Repair with wood adhesive
	P31	500	mm	<5	mm	Repair with wood adhesive
	Pt32	3500	mm	<5	mm	Repair with wood adhesive
	P33	3500	mm	5	mm	Repair with sawdust
	P35-a	2250	mm	<5	mm	Repair with wood adhesive
	P35-b	1500	mm	<5	mm	Repair with wood adhesive
	P38	3250	mm	5	mm	Repair with sawdust
	P39-a	1500	mm	<5	mm	Repair with wood adhesive
	P39-b	750	mm	<5	mm	Repair with wood adhesive
	Pt39	750	mm	<5	mm	Repair with wood adhesive
	P40	3000	mm	<5	mm	Replace with new purlin
	Pt40	2250	mm	<5	mm	Replace with new purlin
	Pt41-a	1000	mm	<5	mm	Repair with wood adhesive
	Pt41-b	1000	mm	<5	mm	Repair with wood adhesive
	Pt43	1000	mm	<5	mm	Repair with wood adhesive
	P45	2000	mm	<5	mm	Repair with wood adhesive
	P47	3750	mm	5	mm	Repair with sawdust
	Pt48	3000	mm	<5	mm	Repair with wood adhesive
	Pt51	2000	mm	<5	mm	Repair with wood adhesive
M	P18	3800	mm	<5	mm	Replace with new purlin
	P20	2750	mm	<5	mm	Replace with new purlin
	Pt20	1500	mm	<5	mm	Replace with new purlin
	Pt21	3800	mm	<5	mm	Repair with wood adhesive
	Pt22	800	mm	<5	mm	Repair with wood adhesive
	P23-a	500	mm	<5	mm	Repair with wood adhesive
	P23-b	1500	mm	<5	mm	Repair with wood adhesive
	Pt25	3800	mm	<5	mm	Repair with wood adhesive
	P26	2000	mm	<5	mm	Replace with new purlin
	Pt26	3800	mm	<5	mm	Replace with new purlin
	P27	2000	mm	<5	mm	Repair with wood adhesive
	Pt29	2500	mm	<5	mm	Repair with wood adhesive
	P30	2750	mm	>5	mm	Repair with sawdust
	P31	1250	mm	<5	mm	Repair with wood adhesive

Area	Location	Length	mm	Width	mm	Proposal treatment
M	Pt31	1000	mm	<5	mm	Repair with wood adhesive
	Pt32-a	2000	mm	<5	mm	Repair with wood adhesive
	Pt32-b	1500	mm	<5	mm	Repair with wood adhesive
	Pt33-a	750	mm	<5	mm	Repair with wood adhesive
	Pt33-b	1250	mm	<5	mm	Repair with wood adhesive
	Pt34	2800	mm	<5	mm	Repair with wood adhesive
	P35	3250	mm	<5	mm	Repair with wood adhesive
	P36	1750	mm	<5	mm	Repair with wood adhesive
	P37	1750	mm	<5	mm	Repair with wood adhesive
	Pt37	3000	mm	<5	mm	Repair with wood adhesive
	P38	1750	mm	<5	mm	Repair with wood adhesive
	Pt38	1500	mm	<5	mm	Repair with wood adhesive
	P39	1000	mm	<5	mm	Repair with wood adhesive
	Pt39	1250	mm	<5	mm	Repair with wood adhesive
	P40	2250	mm	<5	mm	Replace with new purlin
	Pt40	3800	mm	<5	mm	Repair with wood adhesive
	Pt42	1250	mm	<5	mm	Repair with wood adhesive
	Pt43	3800	mm	<5	mm	Repair with wood adhesive
	P44	2250	mm	<5	mm	Replace with new purlin
	Pt44	500	mm	<5	mm	Repair with wood adhesive
	Pt46	3800	mm	<5	mm	Repair with wood adhesive
	Pt47	750	mm	<5	mm	Repair with wood adhesive
	P50	4250	mm	<5	mm	Repair with wood adhesive
	P51-a	1250	mm	<5	mm	Repair with wood adhesive
	P51-b	500	mm	<5	mm	Repair with wood adhesive
L	Pt18	1000	mm	<5	mm	Replace with new purlin
	Pt20	600	mm	<5	mm	Repair with wood adhesive
	Pt21	850	mm	<5	mm	Repair with wood adhesive
	Pt22-a	1300	mm	<5	mm	Repair with wood adhesive
	Pt22-b	1000	mm	<5	mm	Repair with wood adhesive
	P23-a	1000	mm	<5	mm	Repair with wood adhesive
	P23-b	750	mm	<5	mm	Repair with wood adhesive
	Pt23-a	1250	mm	<5	mm	Repair with wood adhesive
	Pt23-b	500	mm	<5	mm	Repair with wood adhesive
	P24-a	350	mm	5	mm	Repair with sawdust
	P24-b	1500	mm	<5	mm	Repair with wood adhesive
	P26	1250	mm	<5	mm	Repair with wood adhesive
	Pt27-a	1000	mm	<5	mm	Repair with wood adhesive
	Pt27-b	1100	mm	<5	mm	Repair with wood adhesive
	Pt28	3500	mm	<5	mm	Repair with wood adhesive
	P29	1000	mm	<5	mm	Repair with wood adhesive
	P30	750	mm	<5	mm	Repair with wood adhesive
	P31	3000	mm	5	mm	Replace with new purlin
	Pt32	1000	mm	<5	mm	Repair with wood adhesive
	P33	750	mm	<5	mm	Repair with wood adhesive
	P34	1250	mm	<5	mm	Replace with new purlin
	Pt34-a	750	mm	<5	mm	Replace with new purlin
	Pt34-b	1800	mm	<5	mm	Replace with new purlin
	P35	2500	mm	<5	mm	Repair with wood adhesive
	Pt36	1000	mm	<5	mm	Repair with wood adhesive

Area	Location	Length	mm	Width	mm	Proposal treatment
L	Pt37	2000	mm	<5	mm	Repair with wood adhesive
	Pt38	3250	mm	<5	mm	Repair with wood adhesive
	P39	1250	mm	<5	mm	Repair with wood adhesive
	Pt39-a	1250	mm	<5	mm	Repair with wood adhesive
	Pt39-b	1250	mm	<5	mm	Repair with wood adhesive
	Pt40	3500	mm	<5	mm	Repair with wood adhesive
	P41	3000	mm	5	mm	Repair with sawdust
	Pt41-a	2250	mm	<5	mm	Repair with wood adhesive
	Pt41-b	750	mm	<5	mm	Repair with wood adhesive
	P42	1750	mm	<5	mm	Repair with wood adhesive
	P43	1250	mm	<5	mm	Repair with wood adhesive
	Pt43	1250	mm	<5	mm	Repair with wood adhesive
	P44	2000	mm	<5	mm	Repair with wood adhesive
	Pt44	2500	mm	<5	mm	Repair with wood adhesive
	Pt45	2000	mm	<5	mm	Repair with wood adhesive
	P46	1500	mm	<5	mm	Repair with wood adhesive
	P47-a	1250	mm	<5	mm	Repair with wood adhesive
	P47-a	1000	mm	<5	mm	Repair with wood adhesive
	Pt47	1000	mm	<5	mm	Repair with wood adhesive
	P48	750	mm	<5	mm	Repair with wood adhesive
	Pt48	3000	mm	<5	mm	Repair with wood adhesive
	P49-a	1250	mm	<5	mm	Repair with wood adhesive
	P49-a	2000	mm	<5	mm	Repair with wood adhesive
	Pt50	3500	mm	<5	mm	Repair with wood adhesive

Summary

Purlin to be replace		No.
Area L	P18	2
	P40	
Area M	P18	5
	P20	
	P26	
	P40	
	P44	
Area R	P18	3
	P31	
	P34	

Total: 10