



PREVENTION OF DETERIORATION OF BUILT ENVIRONMENT AND LANDSCAPE IMPROVEMENT IN LAI CHI WO VILLAGE

Schematic Proposal (2nd Draft)

April 29, 2022

1

設計概念

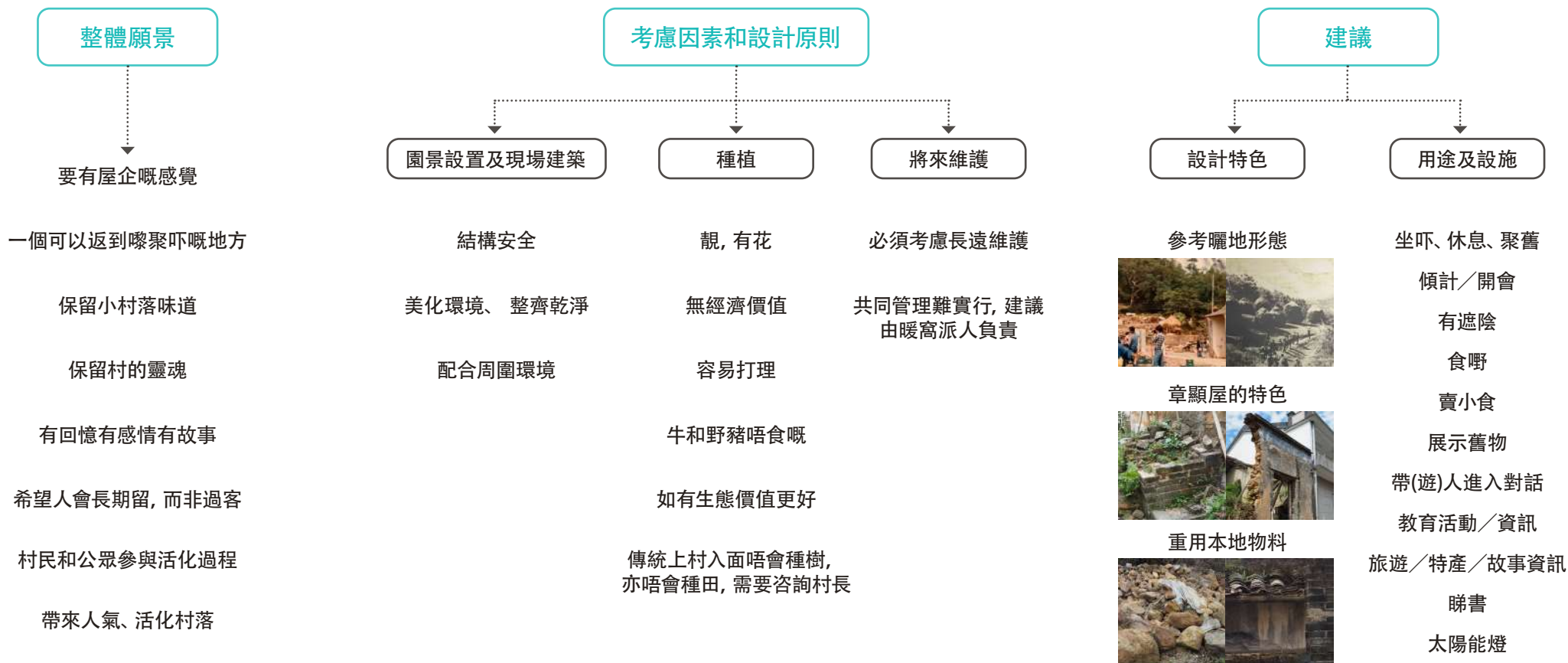
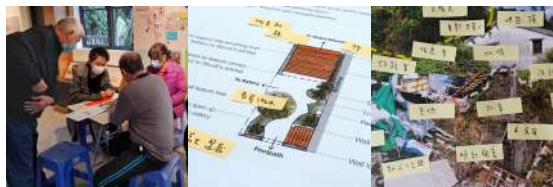
從「人不在而屋在」 到「屋不在而人在」

鄉村復興 + 體驗教育 + 自然共生

Reference: 鄉郊基金, Supporting Host. 荔誌:「永續荔枝窩」四年回顧及展望. Chu Ban.; 初版. ed. 香港: 香港大學社會科學學院策動永續發展坊, 2017. Print.

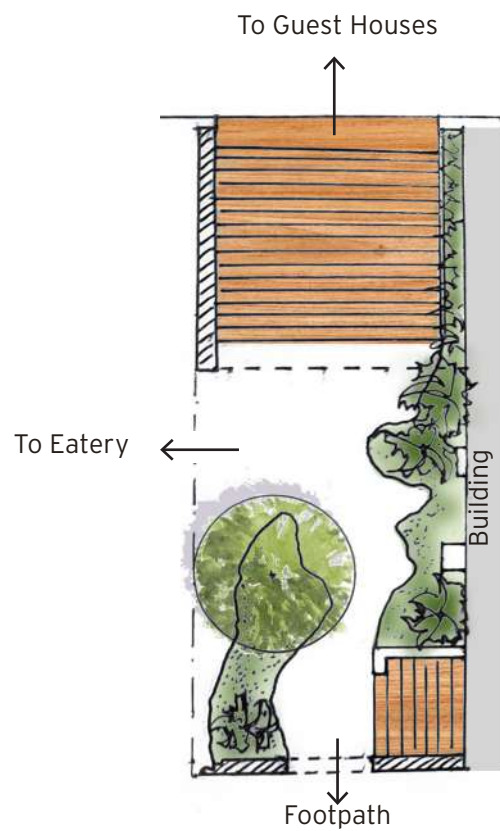
2

與村民現場和網上對談的結論概要



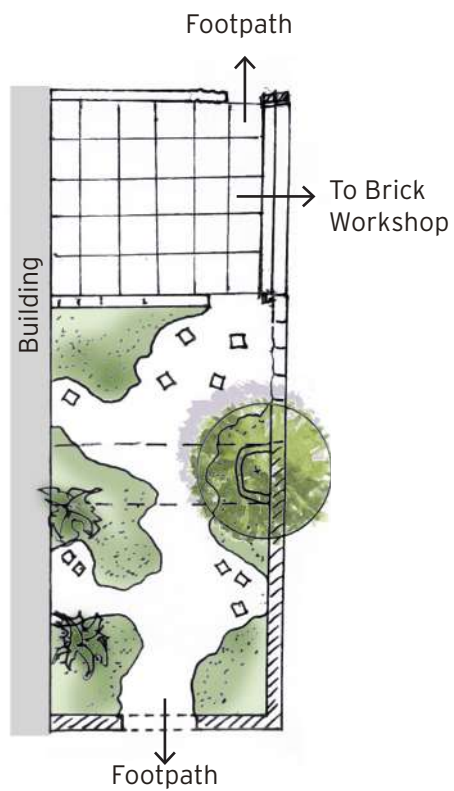
3

舊設計方案



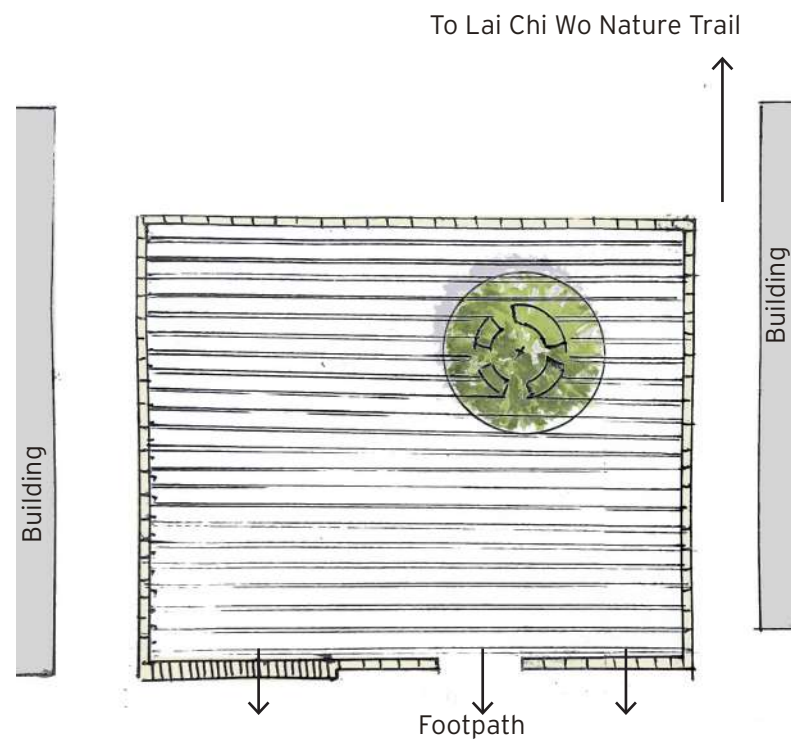
Lot 209

COMMUNAL COURTYARD



Lot 205

BRICK GARDEN



Lot 237

MINI-EVENT PLAZA

屋企嘅感覺

遮陰

對話

教育活動

坐吓、休息、聚舊

舊物

容易打理的植物

配合周圍環境



屋頂處理

Discussed in meeting



坑渠上放置渠蓋

連接園內木地台



牆身處理

Discussed in meeting

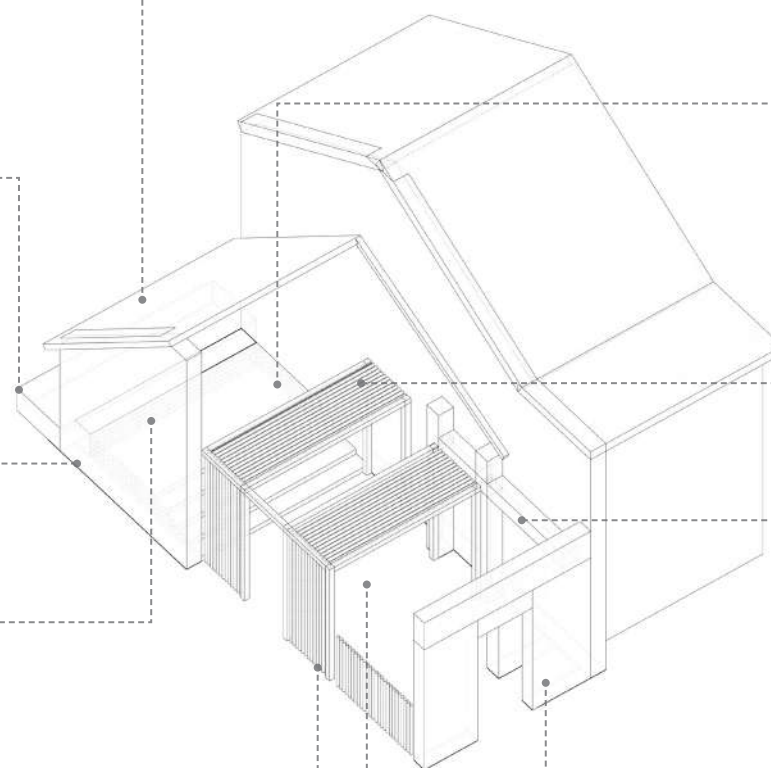


保留掛牆的農業用具



木座椅 (考慮重用現場的木樑)

盆栽



梯級式小聚空間

木地台



竹制半遮陰的空間

Discussed in meeting



保留牆身舊屋的痕跡



牆身處理

Discussed in meeting



舊設計方案 Lot 209 (1st Draft)

重用本地物料 教育活動

小村落味道 有回憶有感情有故事

容易打理

舊物

坐吓、休息、聚舊

章顯屋的特色



石磚鋪地



牆身處理

Discussed in meeting



土磚花園



牆身處理

Discussed in meeting



舊物藝術裝置

新建青磚瓦片特色牆

Designated Exempted Works



磚製休憩空間

通往土磚工作坊



拆除高處間牆



牆身處理

Discussed in meeting



復修灶頭



舊設計方案 Lot 205 (1st Draft)

4

整體策略: 定位

空間佈區

- 開揚的活動空間
- 開揚而適合隨便坐的地方
- 村民小聚的地方

現時荔枝窩開揚的空間集中於東門和小瀛故事館外，是村的主入口。村內村屋密集，比較開揚、適合隨便坐的地方主要在村的外圍。

主軸

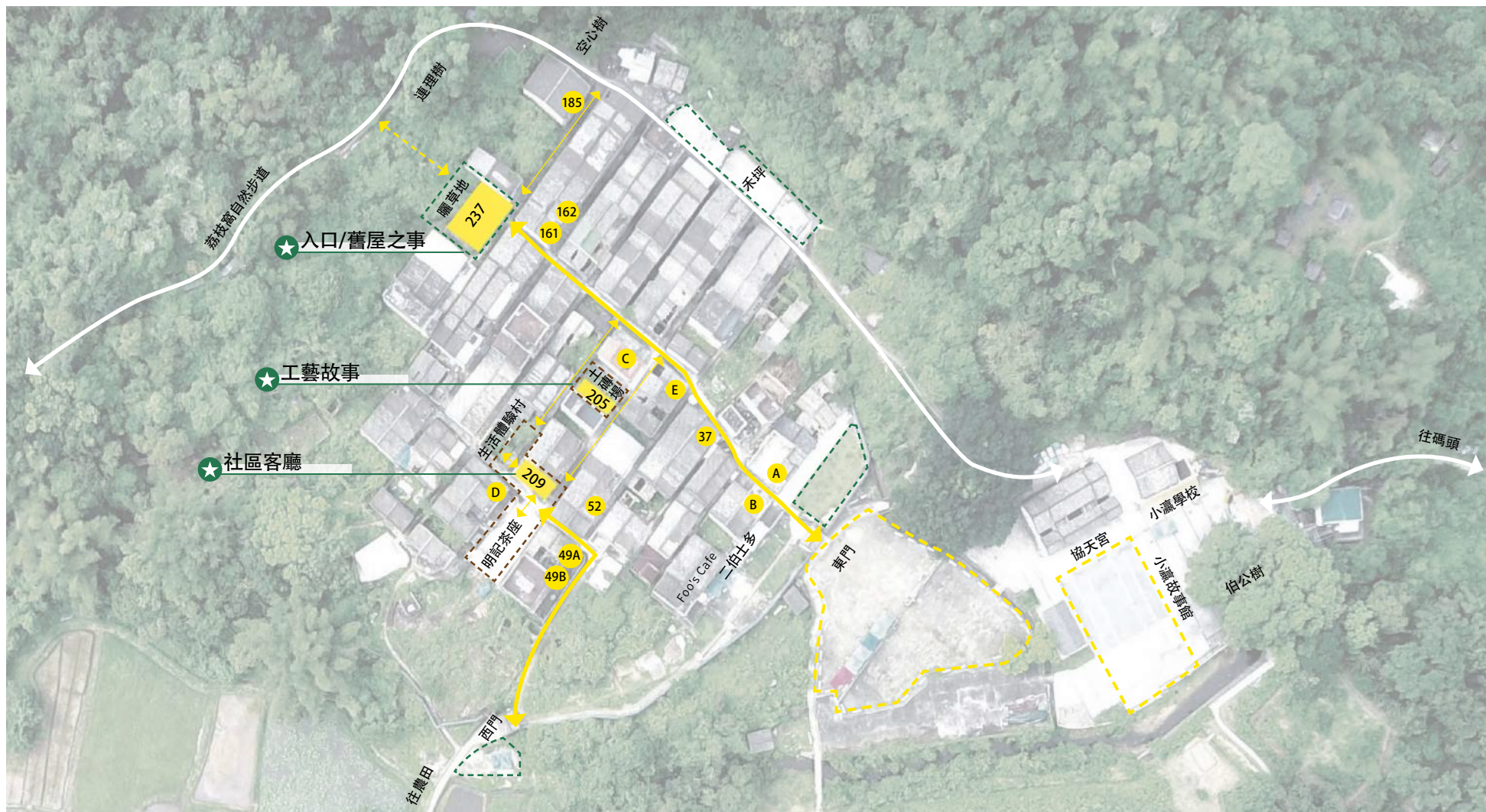
- 主路
- 小路
- 開通山路

LOT 205 和 209 位處村的中心，有助營造「家的感覺」，雖然空間不多，但把附近的茶座、民宿和土磚場一併考慮的話，能夠加強西門至主軸的連繫，亦是村民小聚的地方。

村中景點

- A 荔枝窩文化館
- B 地質教育中心
- C 曾氏宗祠
- D 保育屋
- E 接待處
- 37 花花雪條
- 49AB 計劃中的長春社展示廳
- 52 尋田探土、埔姜仔（藝術）
- 161 香草番梘
- 162 木頭（工藝建築）
- 185 荔林咖啡

LOT 237 位處通往東門的主軸線上，開通山路後，將是從自然步道入村的主入口。設計將會保留第一代舊屋的故事，作為歷史故事的開端，同時亦是適合隨便坐和小型居民活動的地方。



整體策略：循環再用的材料和設計應用

重用本地物料 章顯屋的特色

帶人進入對話 保留村的靈魂

村民和公眾參與活化過程 教育活動

材料現況

櫟



西門石頭/石板



瓦片



磚



泥土



過程
(可以考慮邀請工匠/村民合作)

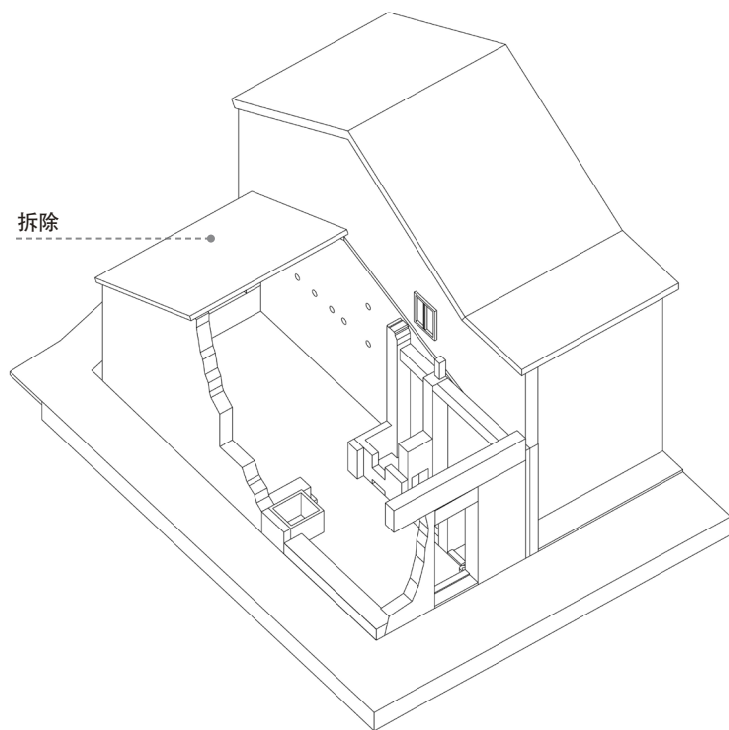


製成品

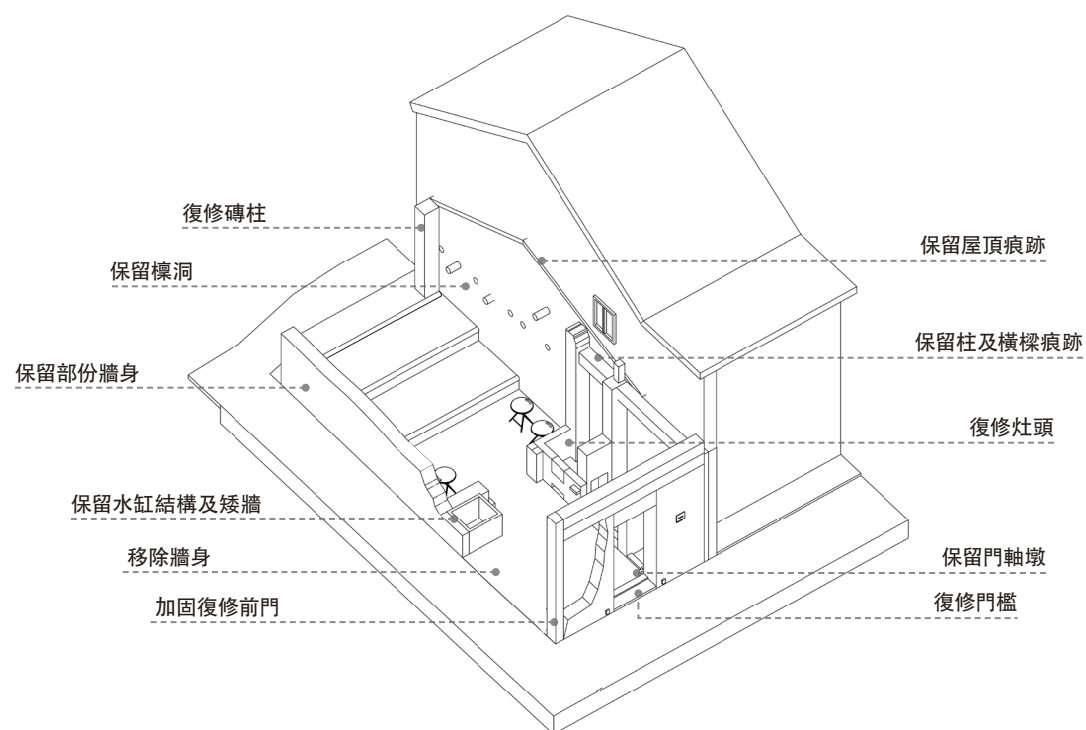


5

設計方案 - Lot 209



改造前



改造後

屋企嘅感覺

對話

教育活動

容易打理的植物

坐吓、休息、聚舊

舊物

配合周圍環境



梯級式小聚木地台
重用拆除的屋頂木樑
(經防蟲處理)



坑渠上放置面渠蓋
連接園內木地台



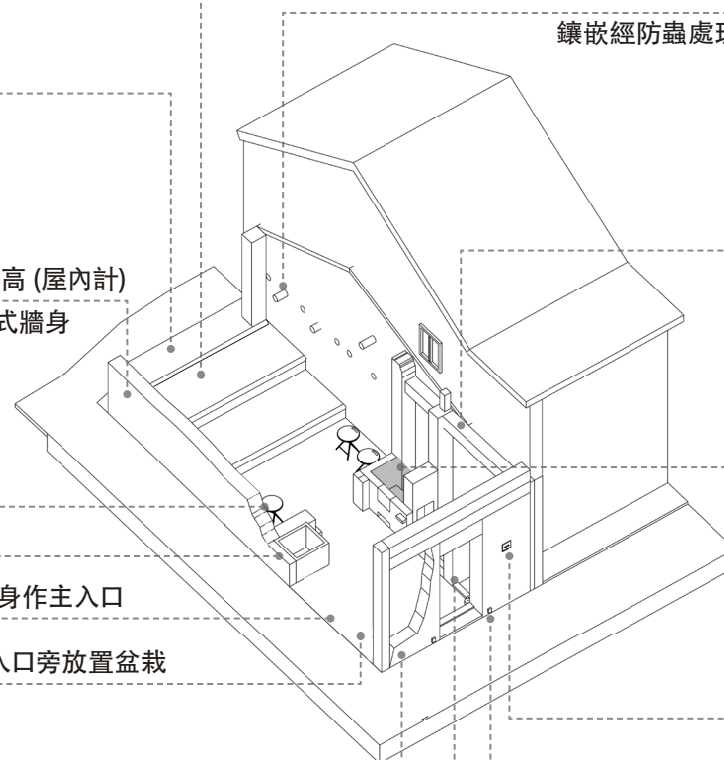
牆拆除至1.5米高 (屋內計)
鑲嵌瓦片作特式牆身



現存結構內放置盆栽



以鐵架加固牆身
(參考台西老街改造)



保留牆身樑洞
鑲嵌經防蟲處理10-20cm的木樑



保留牆身舊屋的痕跡



復修灶頭
可作戶外燒烤

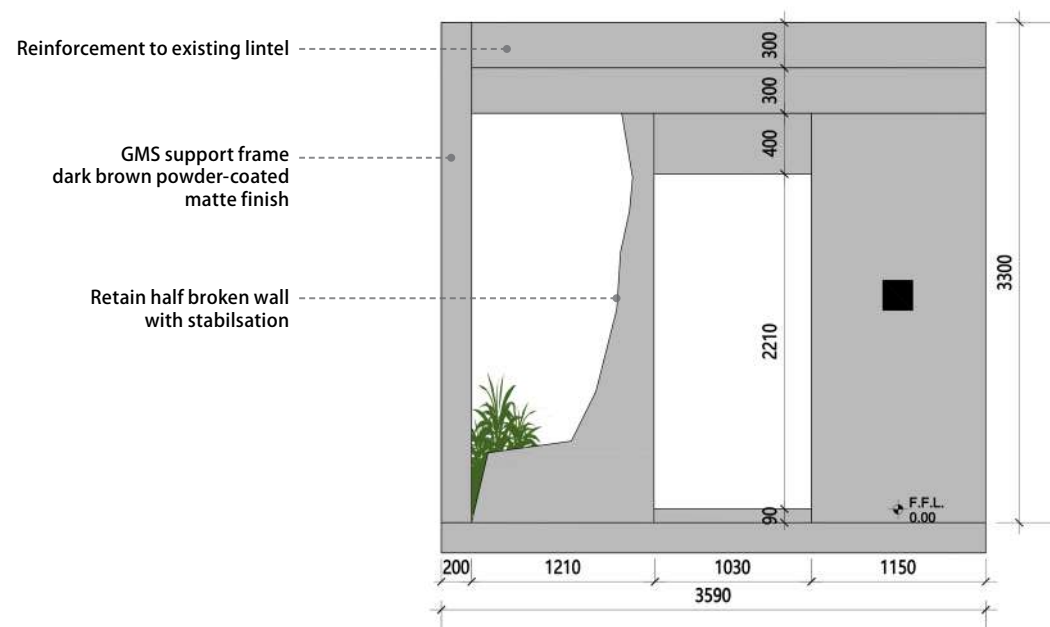
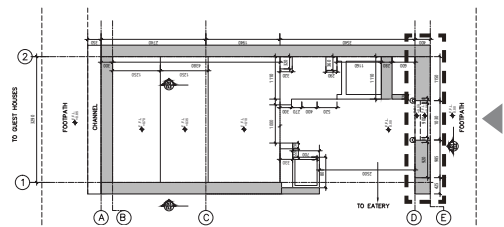


門牌

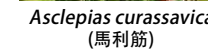
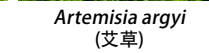
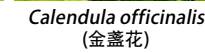
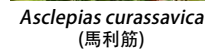
射牆燈

故事牌

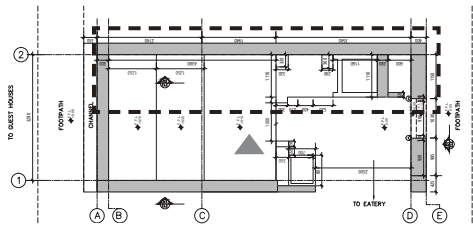




ELEVATION 01



ELEVATION 02

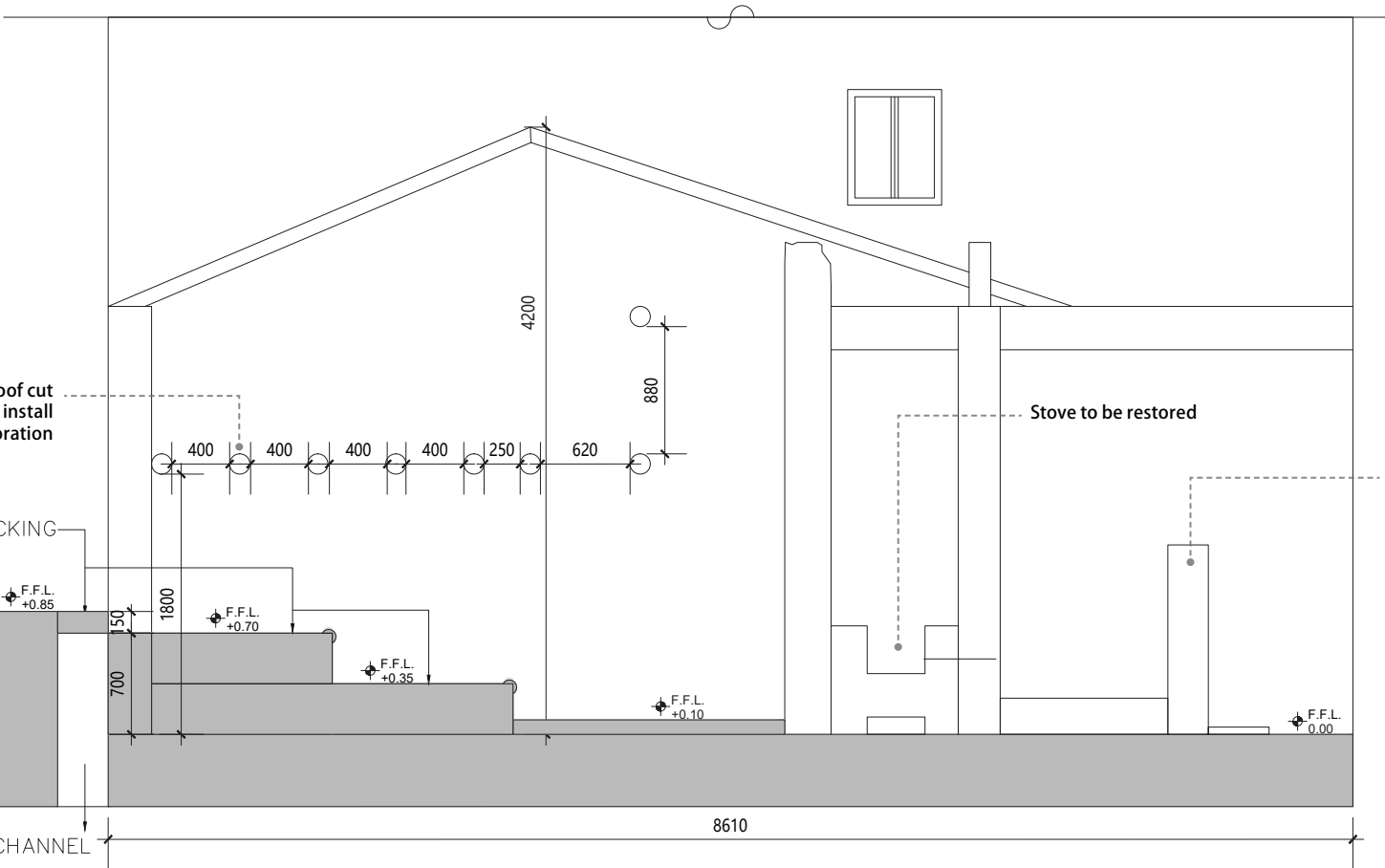


Treated purlins from roof cut to varying lengths and install here as wall decoration

NEW DECKING

PATH

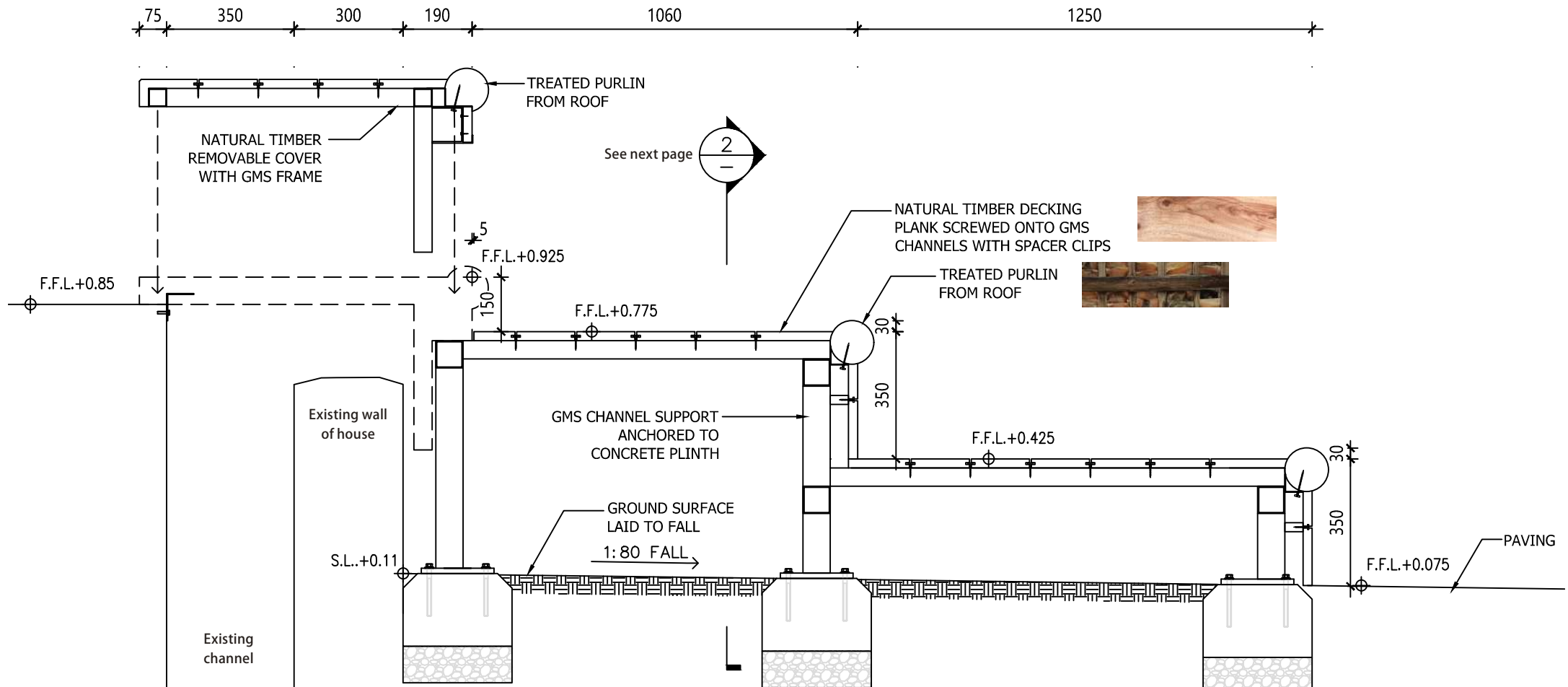
CHANNEL



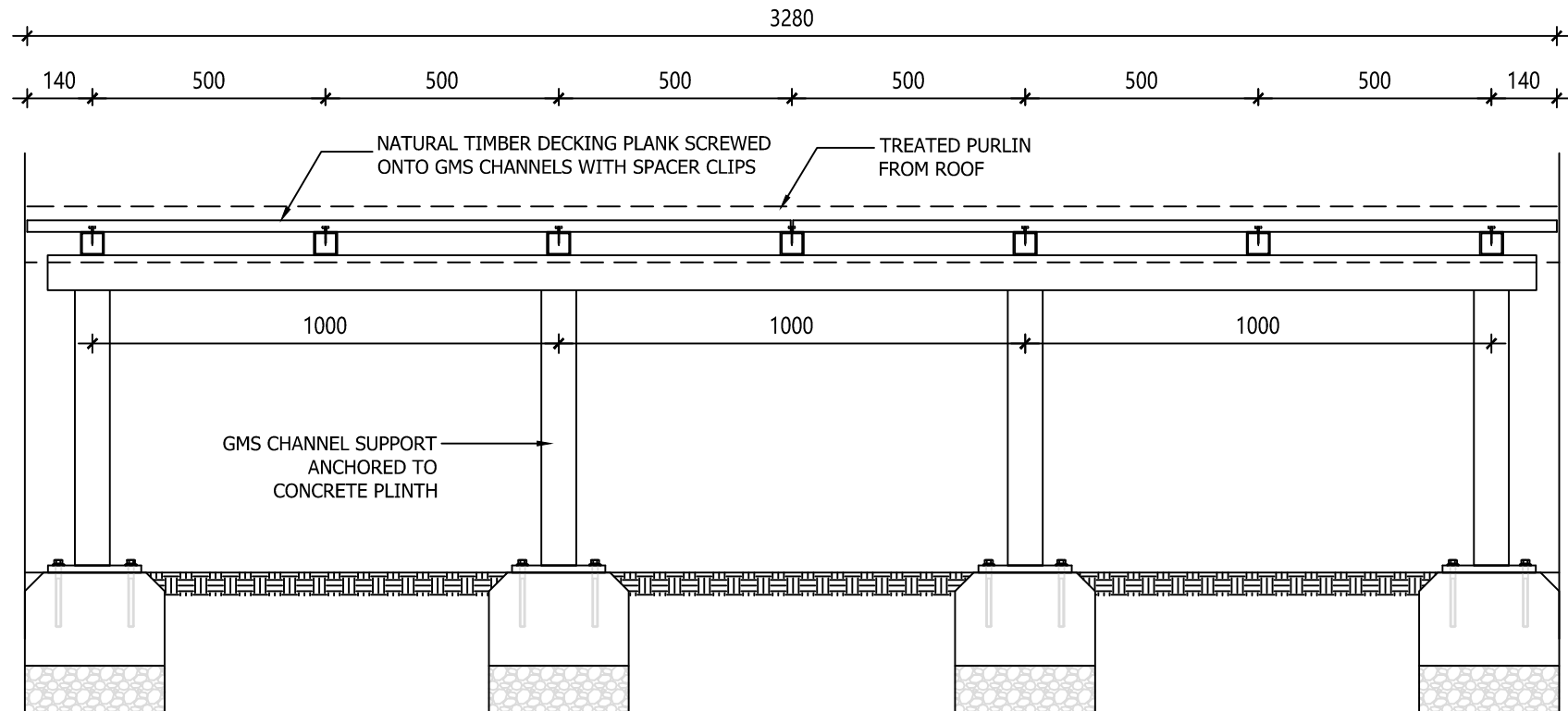
Stove to be restored

Story signage incorporated here

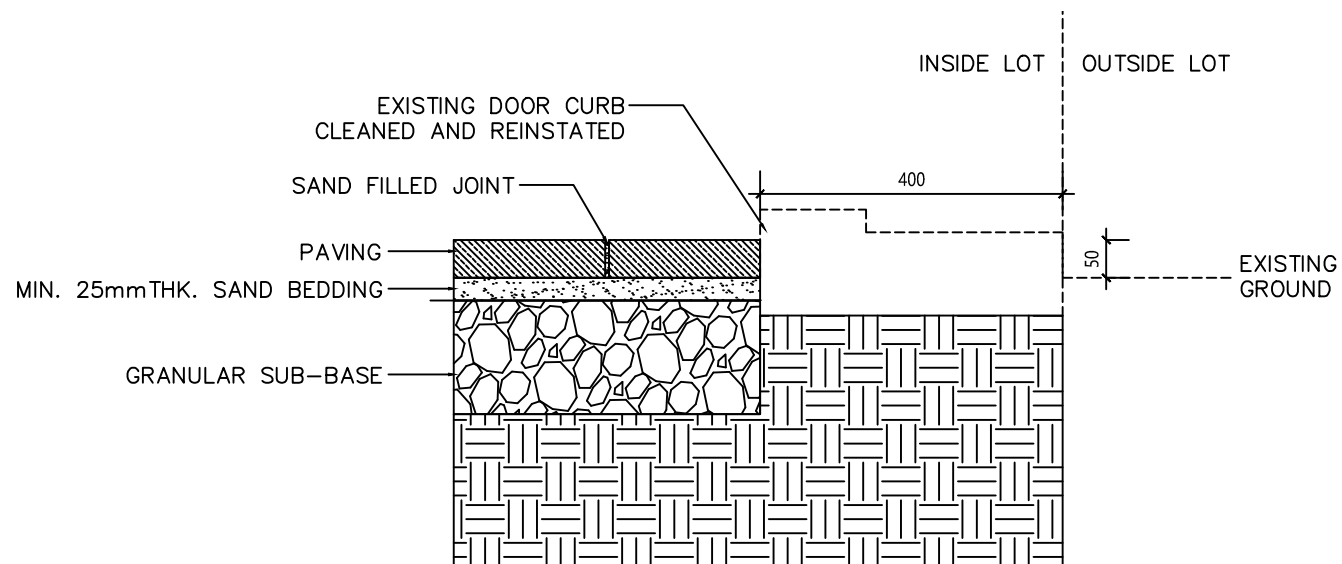
ELEVATION 03



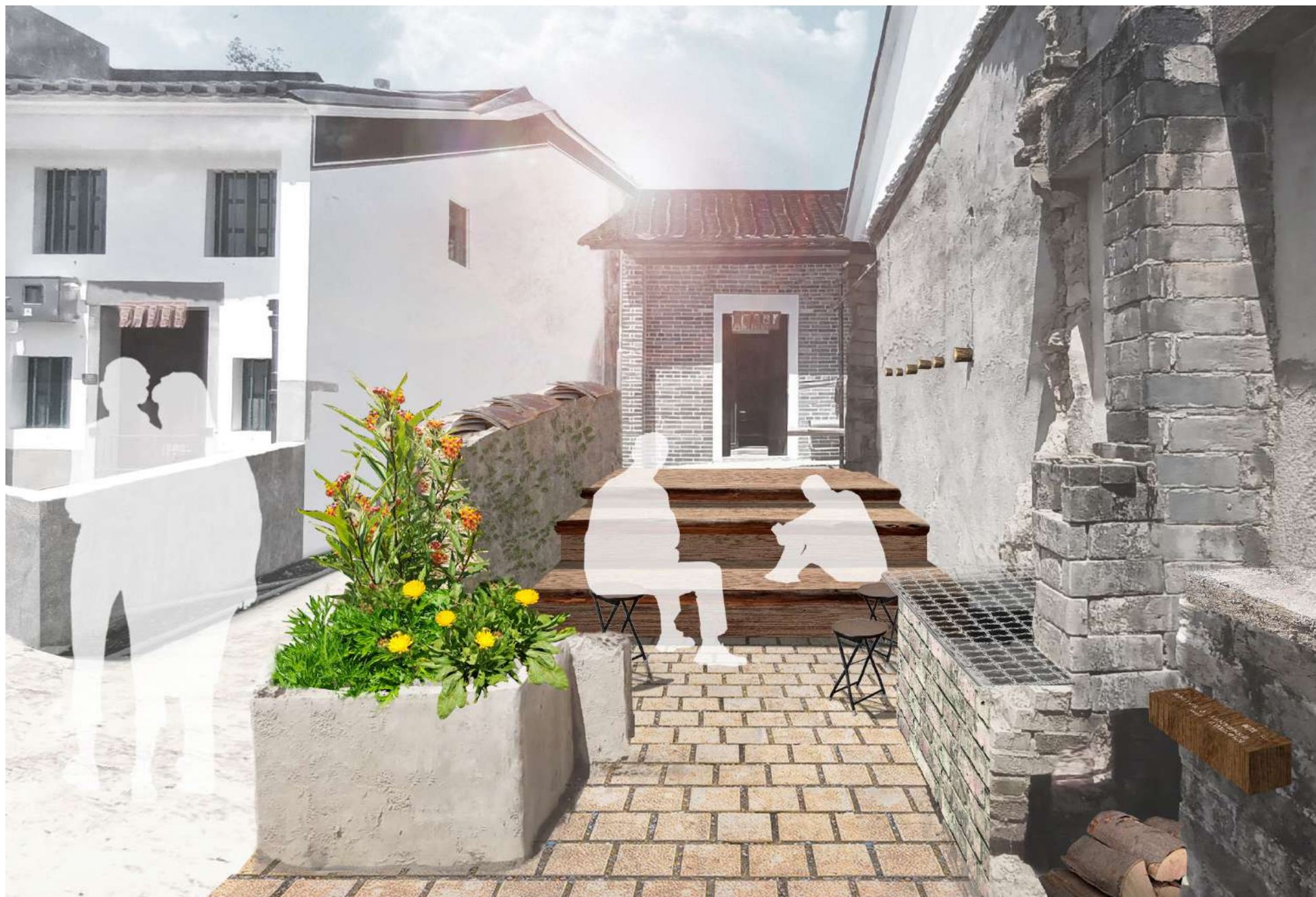
WOOD DECK DETAIL 01



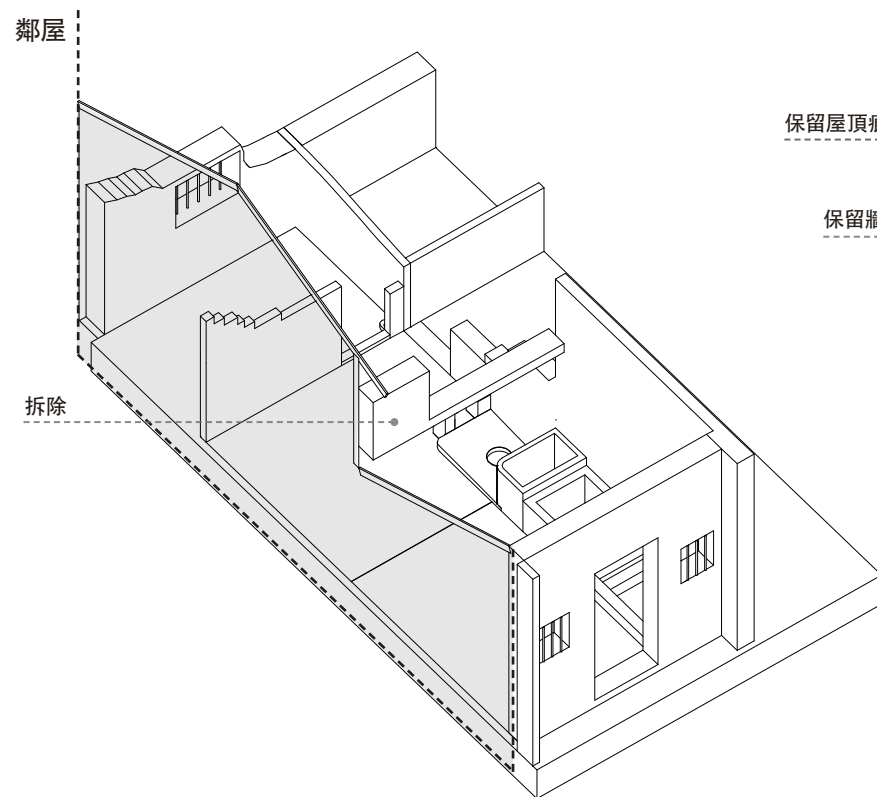
WOOD DECK DETAIL 02



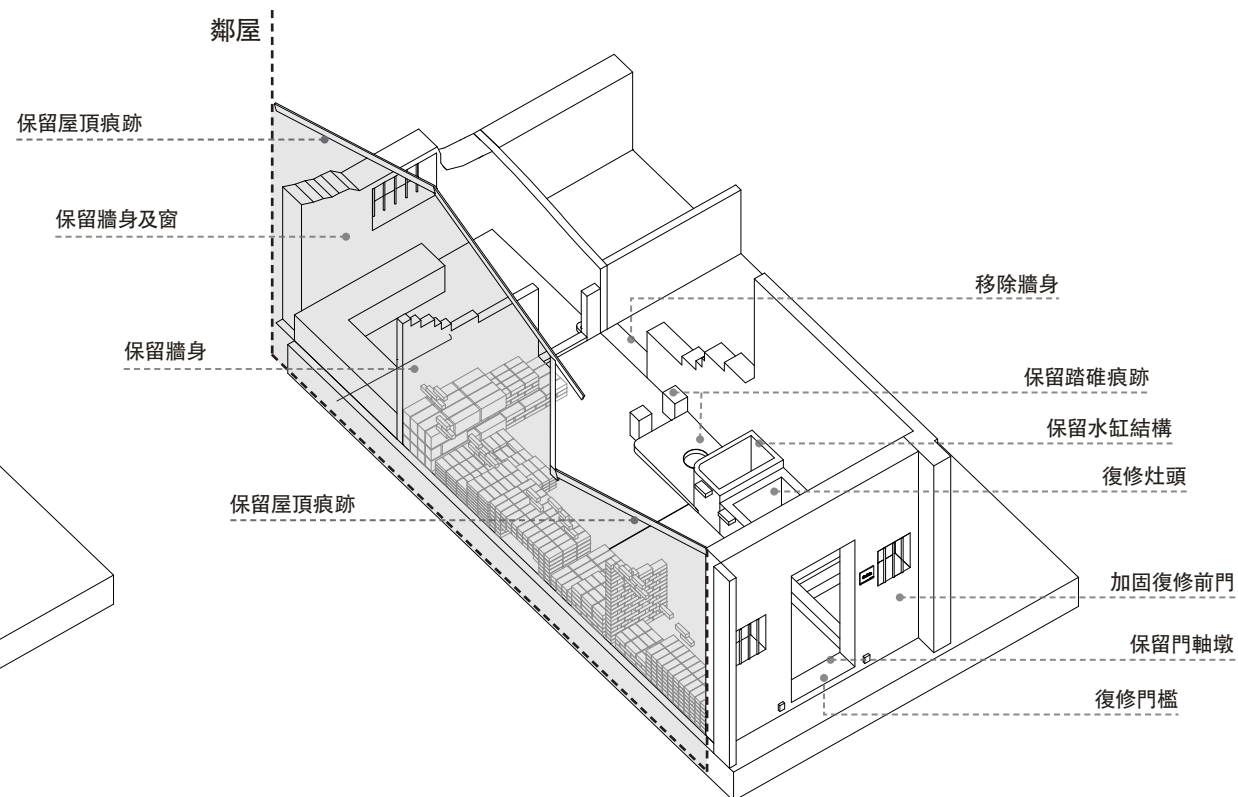
PAVING DETAIL



設計方案 - Lot 205



改造前



改造後

重用本地物料 教育活動

小村落味道 有回憶有感情有故事

容易打理

舊物

坐吓、休息、聚舊

章顯屋的特色



保留牆身舊屋的痕跡



磚製花園

牆上鑲嵌裝飾土磚及故事牌

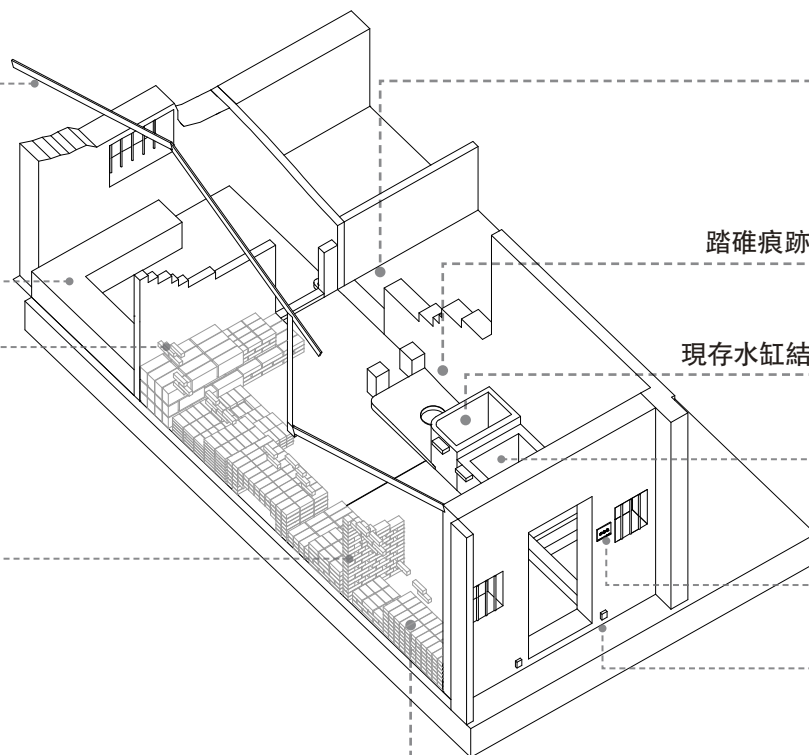


新建青磚瓦片通透特色牆

舊物藝術裝置 (視乎舊物狀況)



磚製休憩空間



移除牆身作通道
通往土磚工作坊



踏碓痕跡後加建矮磚牆
並鑲嵌故事牌



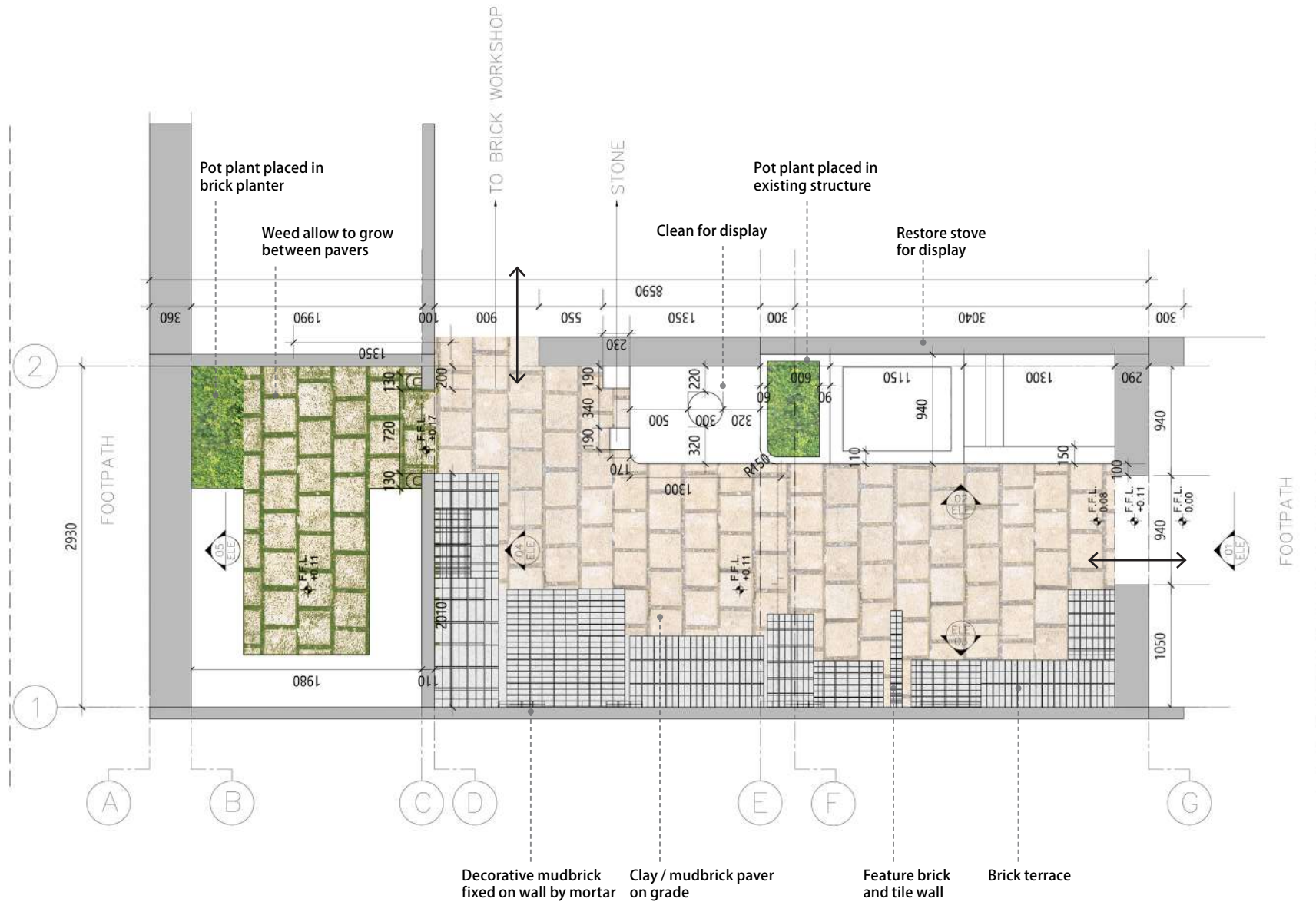
現存水缸結構內放置盆栽

復修灶頭作展示之用
並鑲嵌故事牌

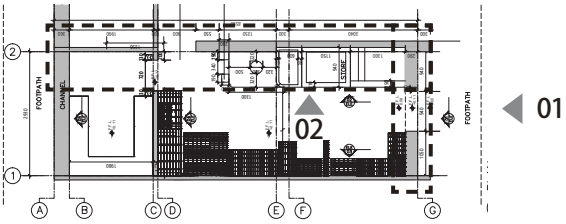


門牌

射牆燈



PLAN N ⊖



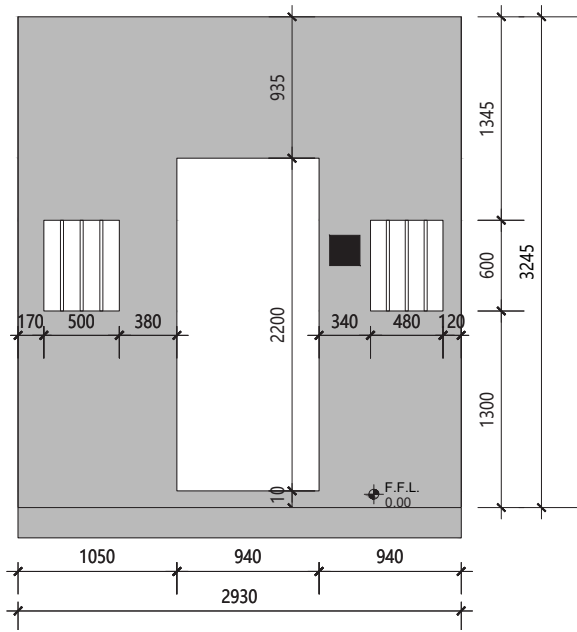
Tagetes lemmonii
(芳香萬壽菊)



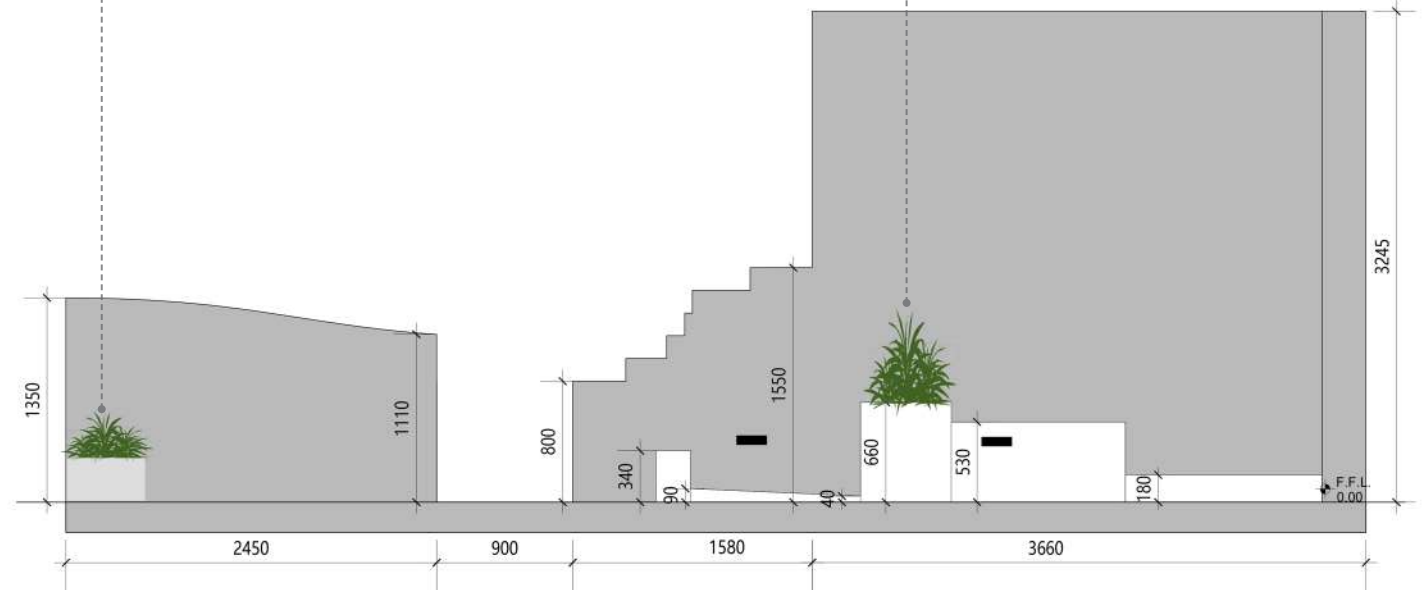
Glebionis coronaria
(春菊)



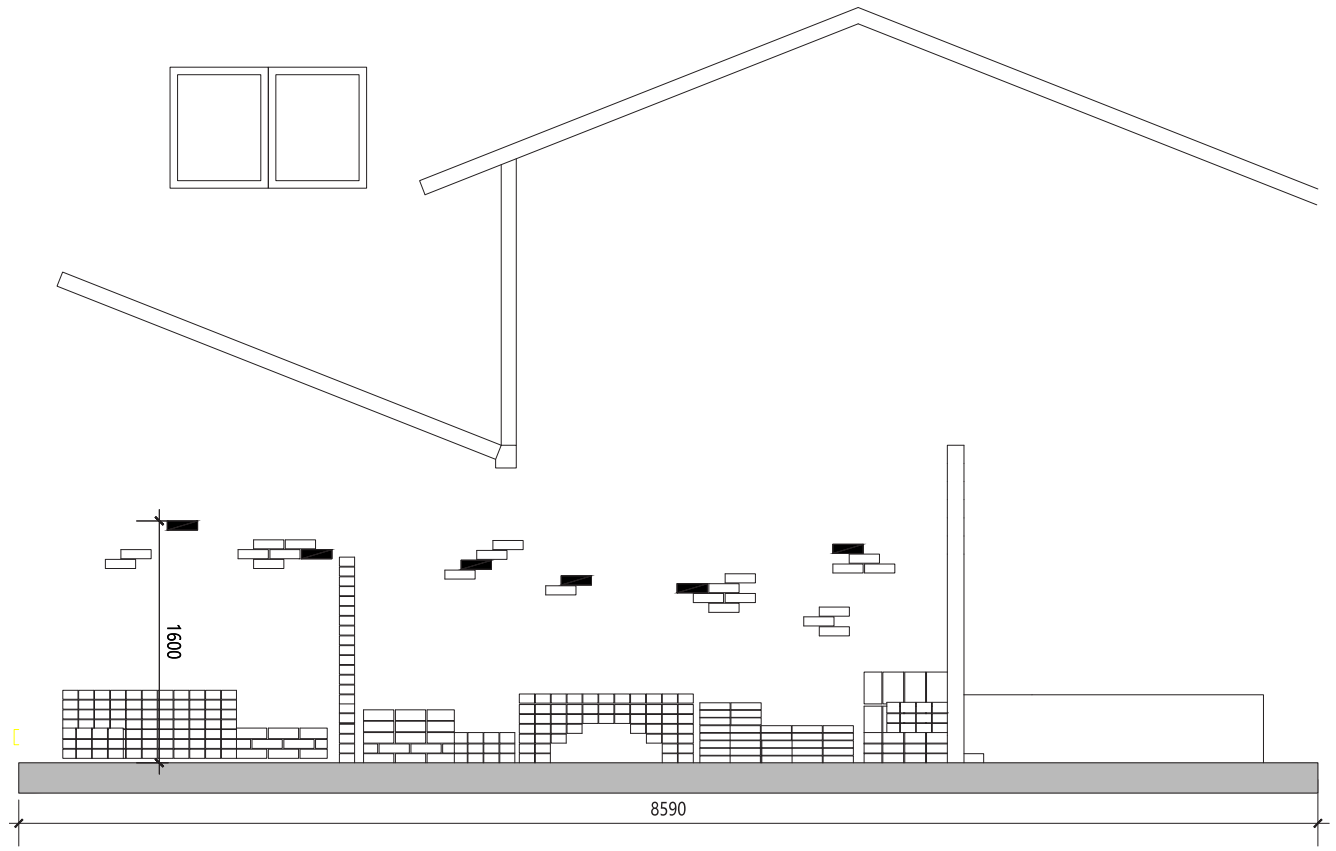
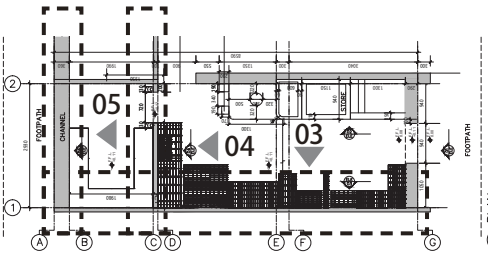
Coreopsis tinctoria
(矮種波斯菊)



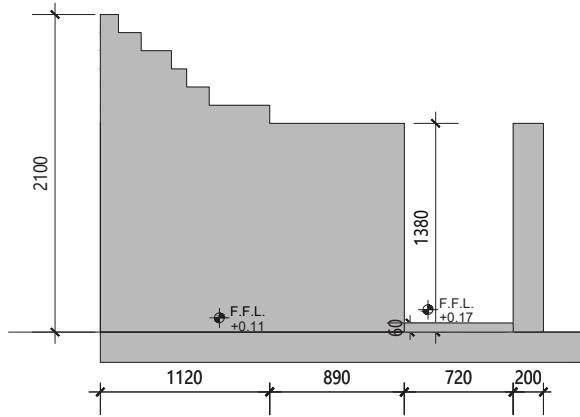
ELEVATION 01



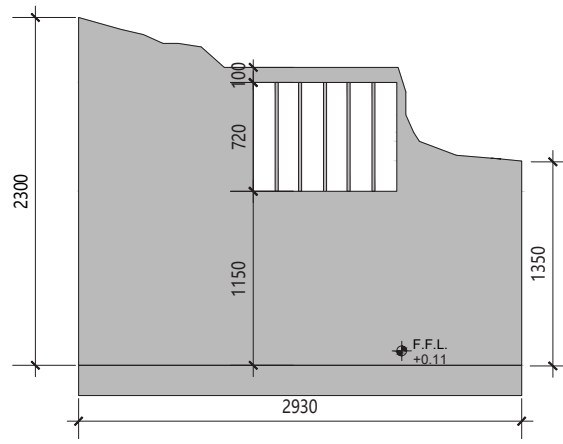
ELEVATION 02



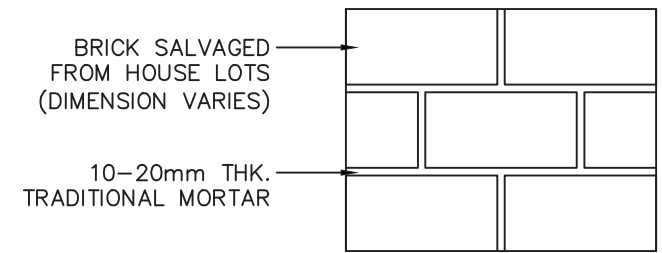
ELEVATION 03



ELEVATION 04



ELEVATION 05



BRICK WALL DETAIL



設計方案 - Lot 237

Consider to lower or open up to improve visual permeability of the site

Edge planting at entrance



Retain wall. Keep this as main entrance

Place name signage

Wall wash light

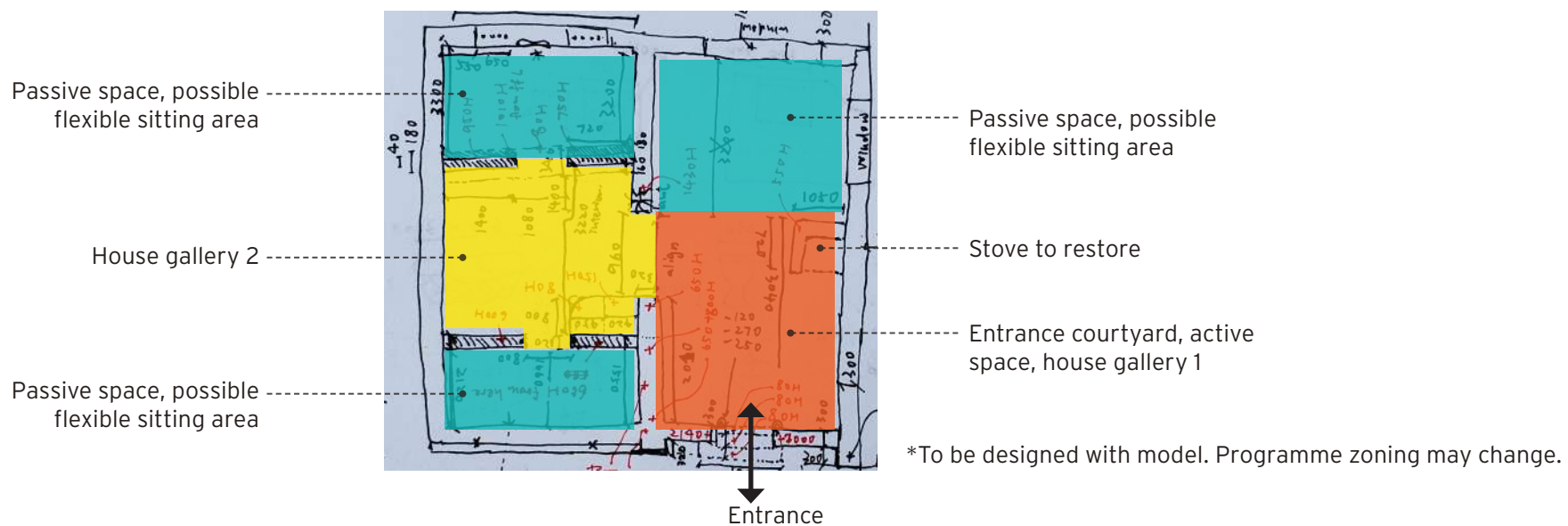
Directional signage



Clear all climbers on tree in site clearance

Clear rocks, debris and poorly grown understorey plant in main contract. Open a path with edge planting to be the "panoramic viewing corridor" with whole view of the house

Edge planting



Restore window as house feature. To original look or with design feature to be considered

Reinstate window

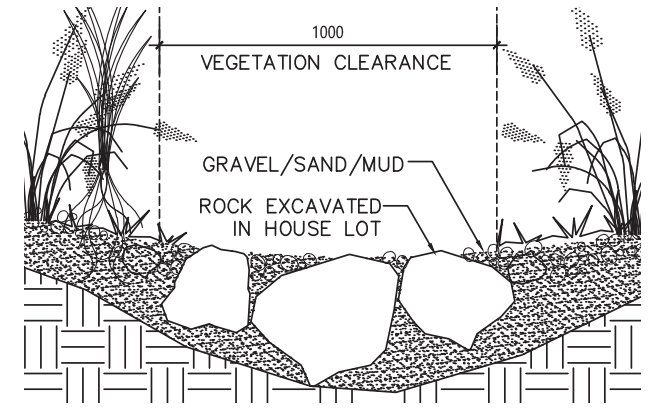


Keep and treat root on wall as feature

"panoramic viewing corridor" behind the windows.
Planting works to get a clean backdrop



Water pipe to align to edge of wall or under paving if possible



Path to Lai Chi Wo Trail made with large rocks excavated from site and from West Gate. Steps (if needed) made with stone)



Form proper steps and pave this path. Paving pattern and material to be considered with the whole site

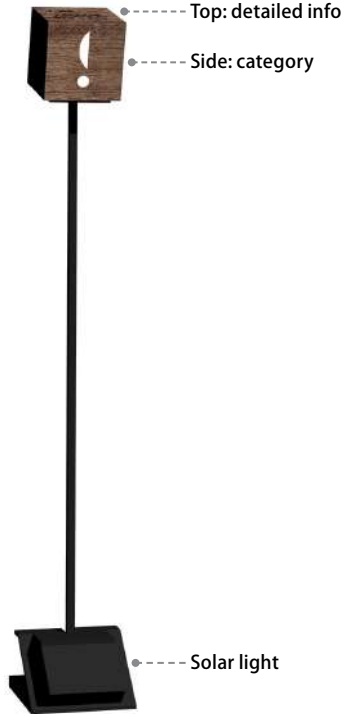
標示牌設計



□ TYPE 1a
碼頭方向



□ TYPE 1b
方向指示



■ TYPE 1c
故事資訊



○ TYPE 2a
屋之故事 (eye level)



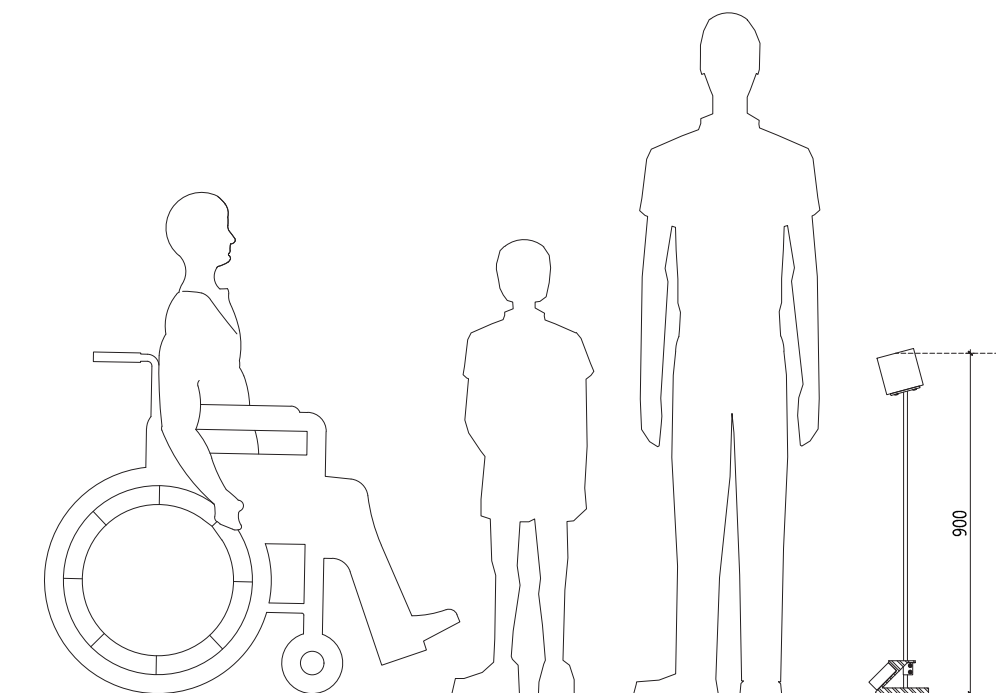
○ TYPE 2b
屋之故事 (low level)



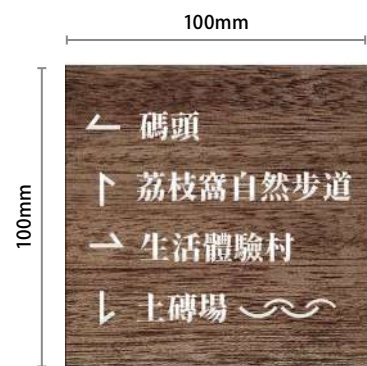
△ TYPE 3
屋之門牌



標示牌設計: Type 1



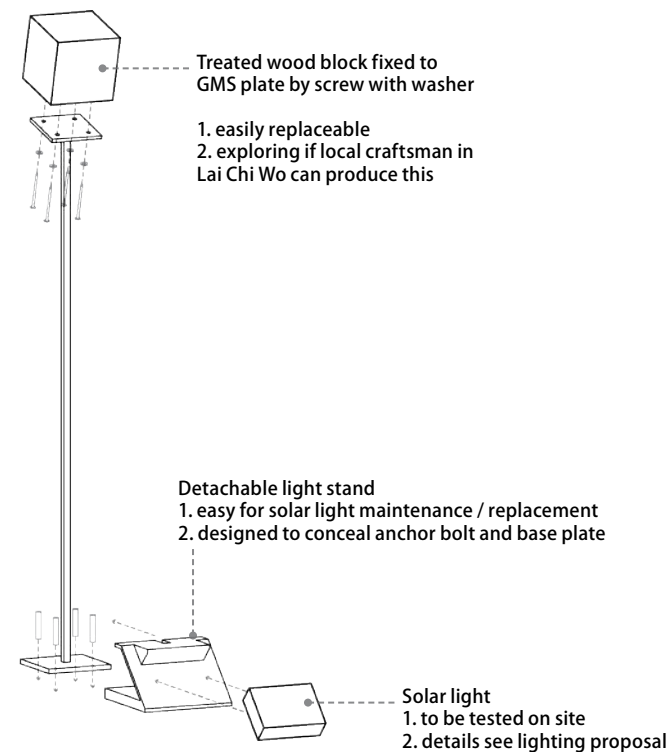
ELEVATION



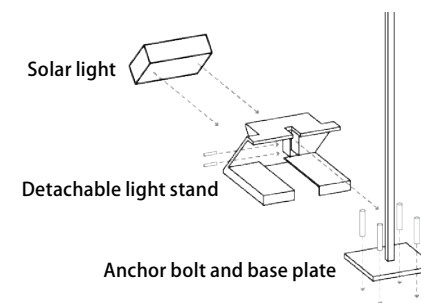
TOP VIEW - TYPE 1a & 1b
(碼頭方向 & 方向指示)



TOP VIEW - TYPE 1c
(故事資訊)*
Story to be gathered from villagers
Location to be recommended by villagers



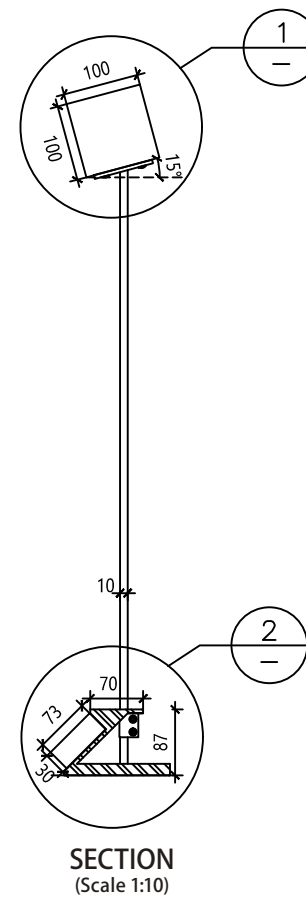
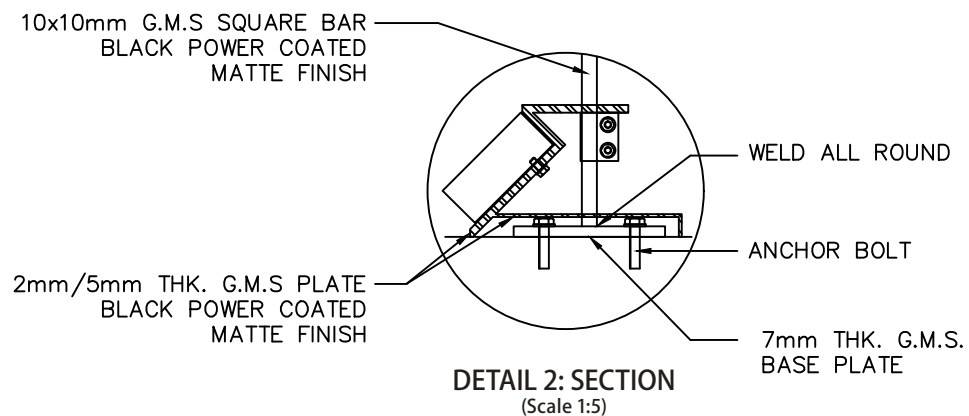
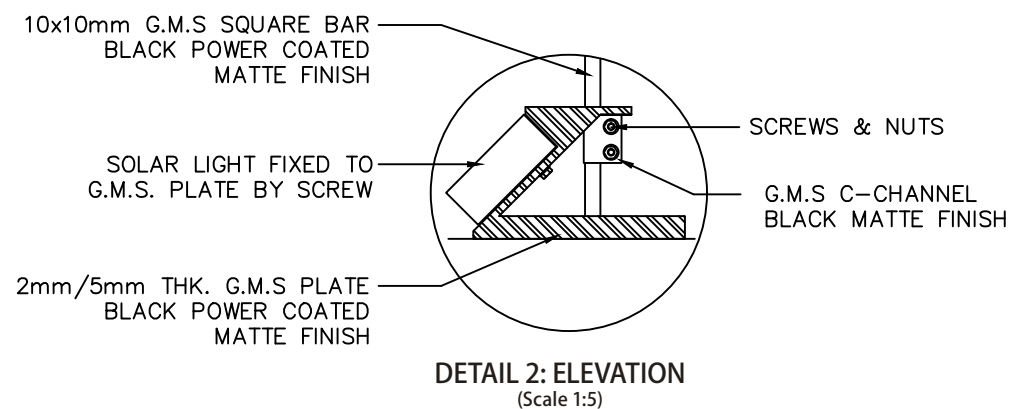
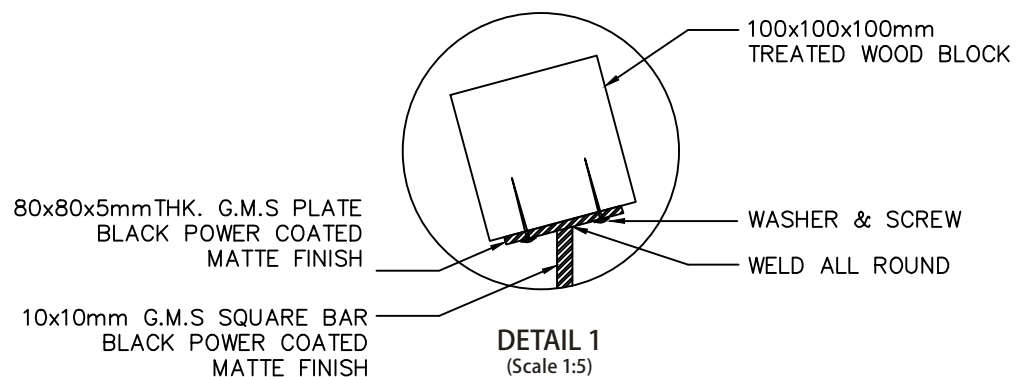
INSTALLATION: FRONT VIEW



INSTALLATION: BACK VIEW

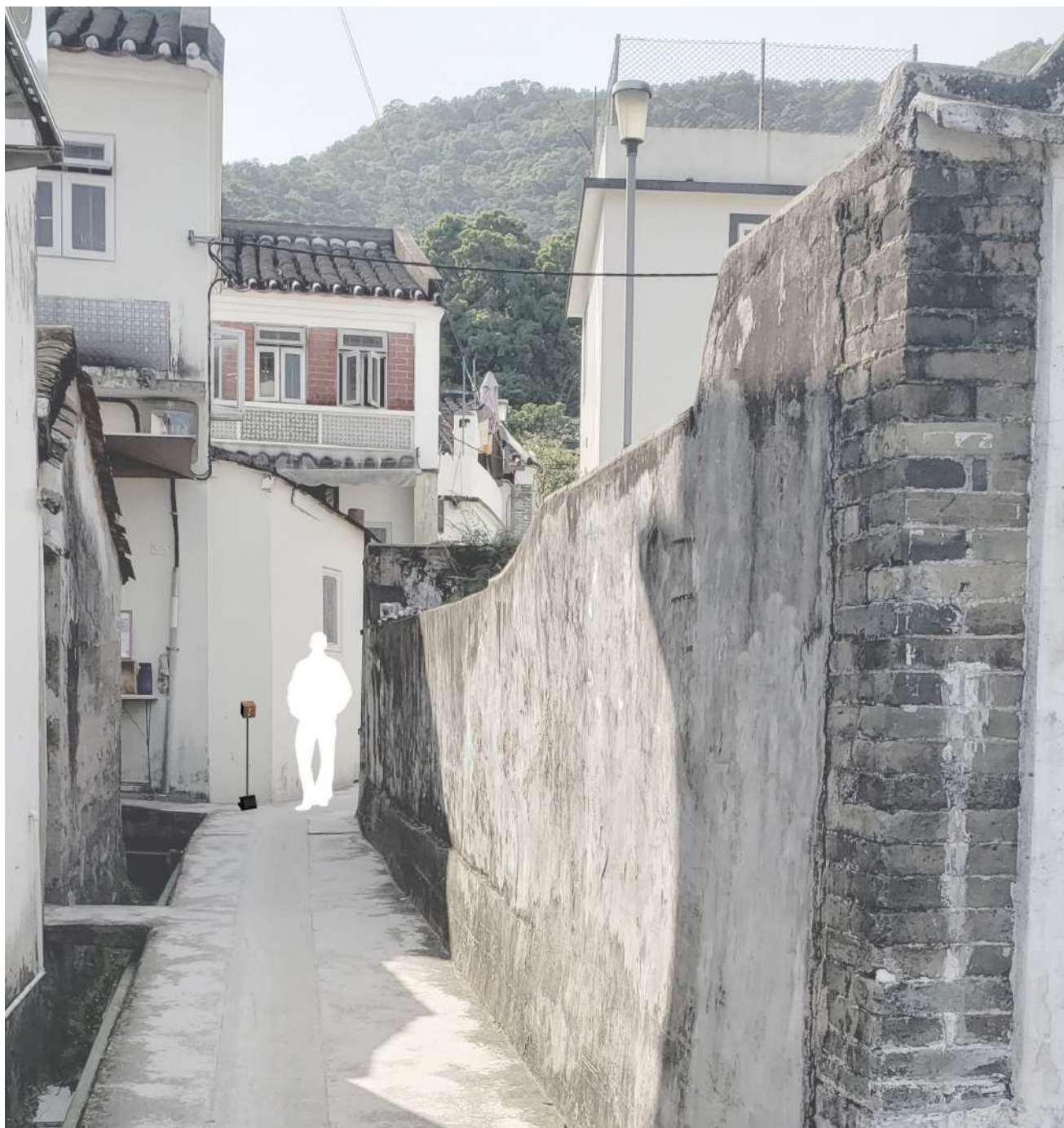


標示牌設計: Type 1





標示牌設計: Type 1



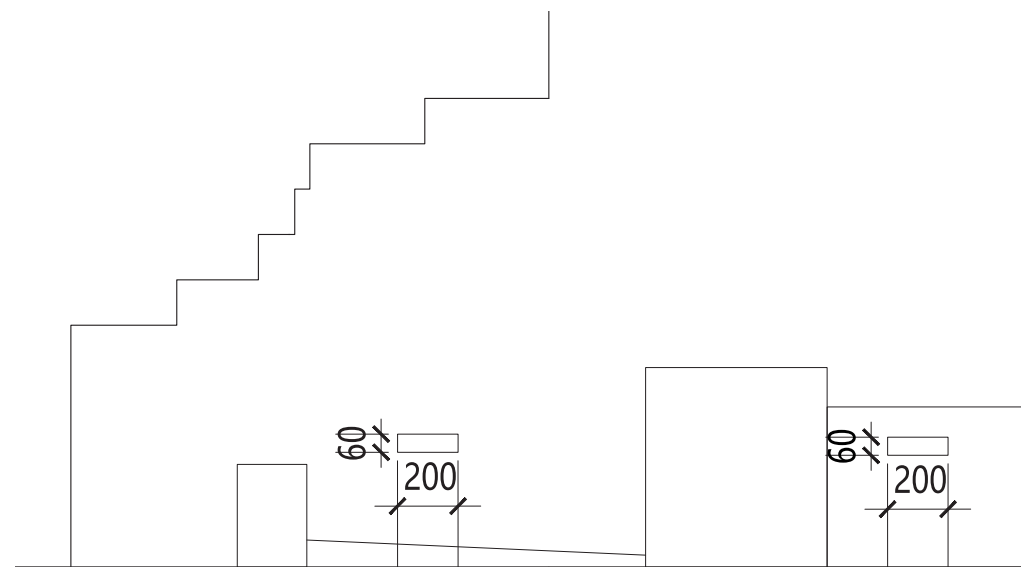


標示牌設計: Type 1 - Prototype Test

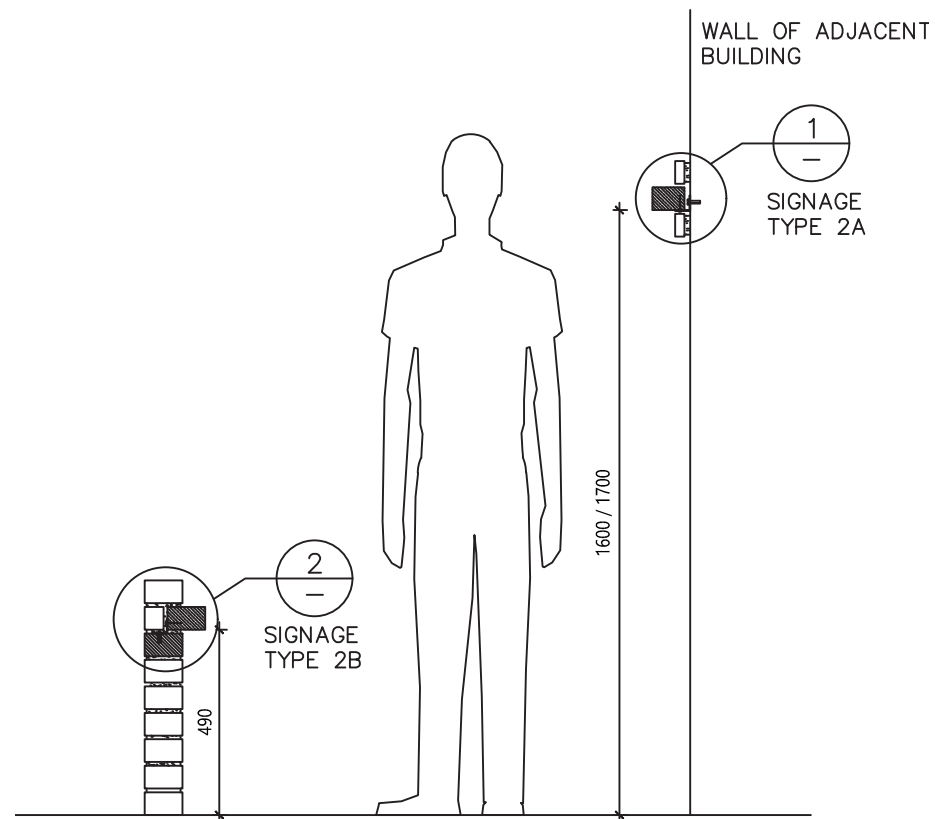




標示牌設計: Type 2



ELEVATION



SECTION



SIDE VIEW - TYPE 2a

TOP VIEW - TYPE 2b

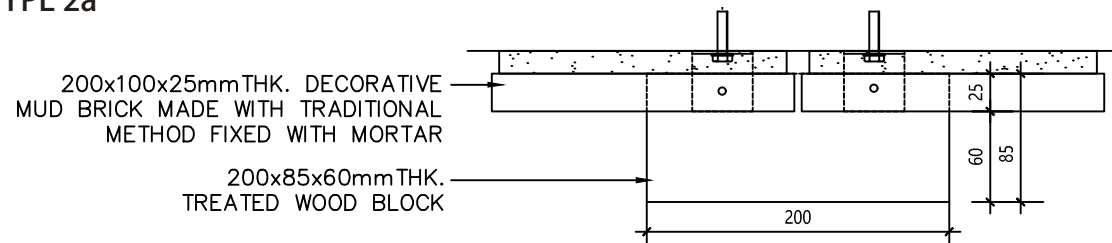
(屋之故事)*

Story to be gathered from villagers

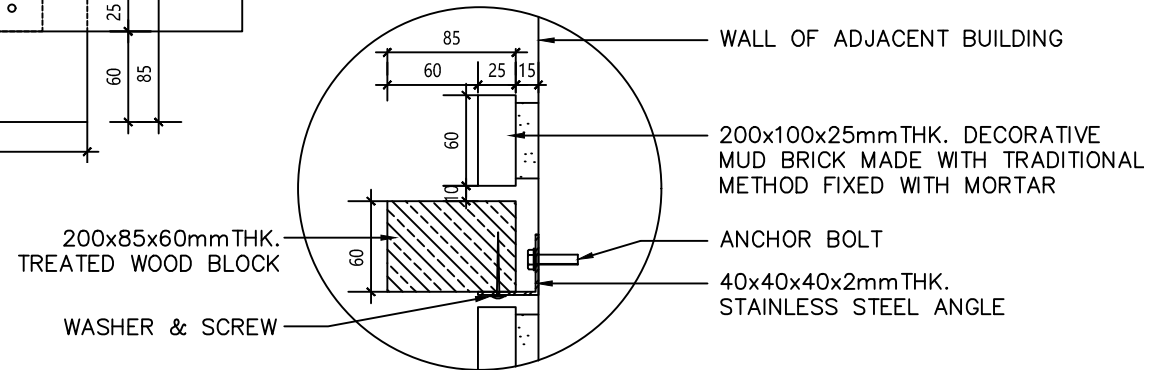


標示牌設計: Type 2

TYPE 2a

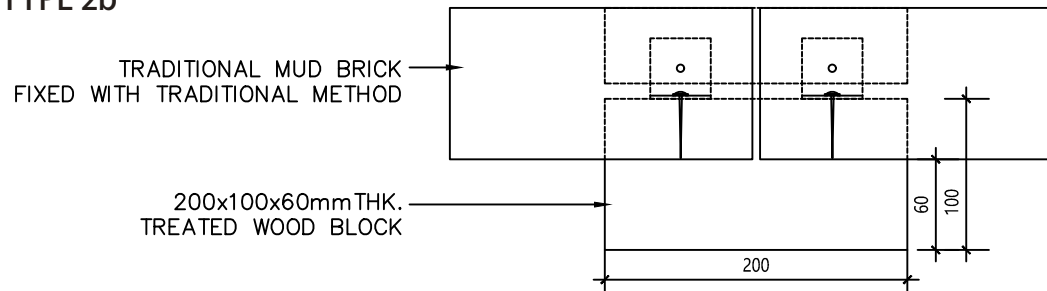


PLAN_1:5

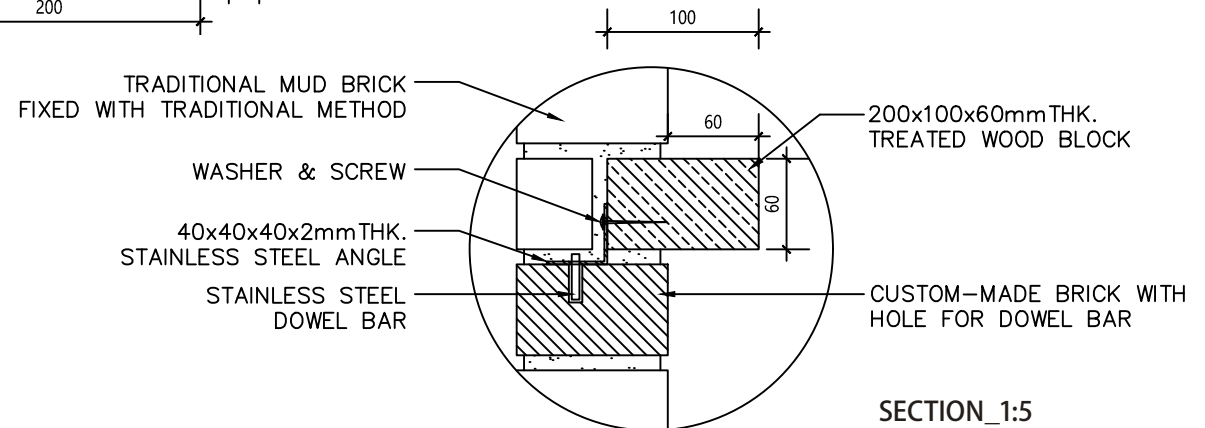


SECTION_1:5

TYPE 2b



PLAN_1:5



SECTION_1:5



標示牌設計: Type 2

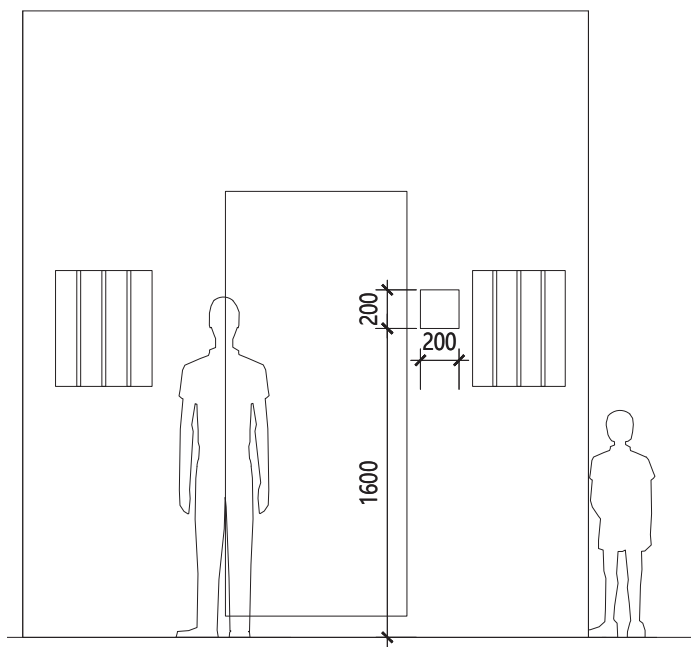




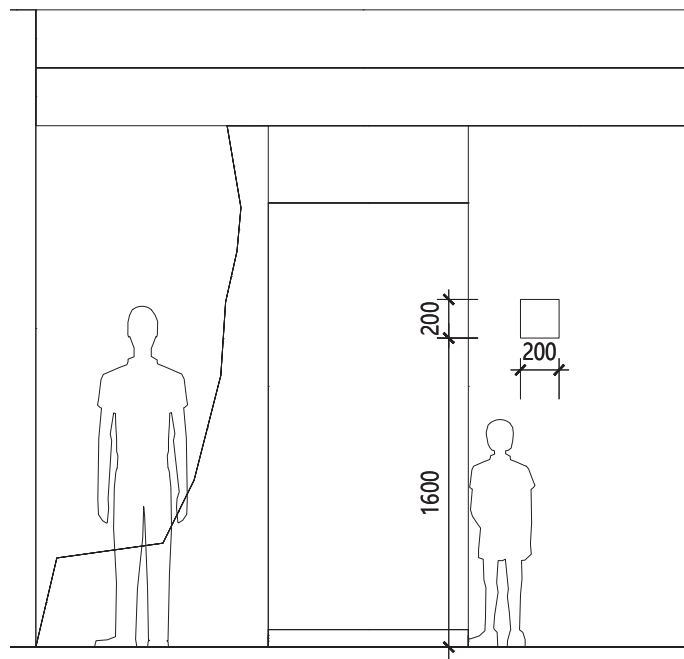
標示牌設計: Type 2 - Prototype Test



標示牌設計: Type 3



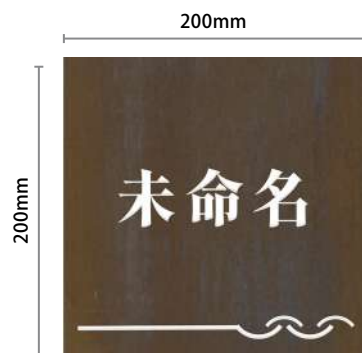
ELEVATION 205



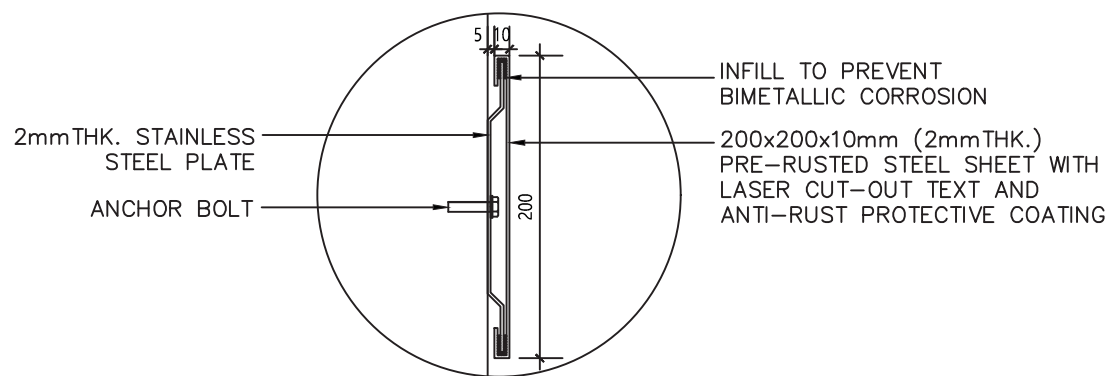
ELEVATION 209



ELEVATION 237



TYPE 3
(屋之門牌)*
Name to be brainstormed with villagers



DETAILS_1:5







標示牌設計: Type 3 (Lot 209) - Prototype Test



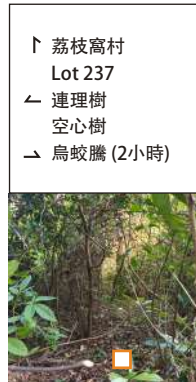
標示牌建議位置

主軸

- 主路
- 小路
- 開通山路

標示牌建議位置

- Type 1a: 碼頭方向
- Type 1b: 方向指示
- Type 1c: 故事資訊
- Type 2a: 屋之故事 (eye level)
- Type 2b: 屋之故事 (low level)
- Type 3: 屋之門牌



Signage 1b-1

Signage 1c-2

Signage 2a &
Signage 2b *
* check with villagers

Signage 2a &
Signage 2b *
* check with villagers

Signage 2b *
* check with villagers

Signage 1a-3



Signage 1a-1

- ← 烏蛟騰 (2小時)
荔枝窩自然步道
連理樹
→ 碼頭/廣場



關於禾坪



Signage 1c-1

- ↑ 荔枝窩自然步道
連理樹
→ 空心樹
↓ 荔枝窩文化館



Signage 1b-2
Signage 3
(Lot 237)

- ↑ 荔枝窩自然步道
Lot 237
← 生活體驗村



Signage 1b-3

Signage 1b-4

Signage 3
(Lot 205)

Signage 1b-5

Signage 3
(Lot 209)

Signage 1a-2

- ↑ 荔枝窩自然步道
Lot 237
← Lot 205/土磚場
Lot 209



- ↑ 荔枝窩自然步道
Lot 237
Lot 205/土磚場
Lot 209



- ← 碼頭/廣場
→ 農田
↓ 生活體驗村
Lot 209



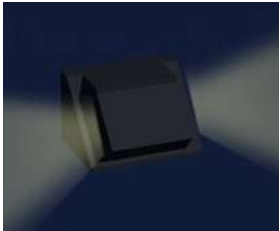
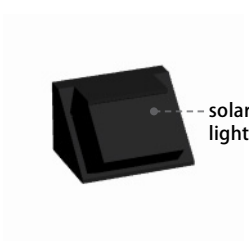
太陽能燈建議位置



TYPE 1



TYPE 3



TYPE 2

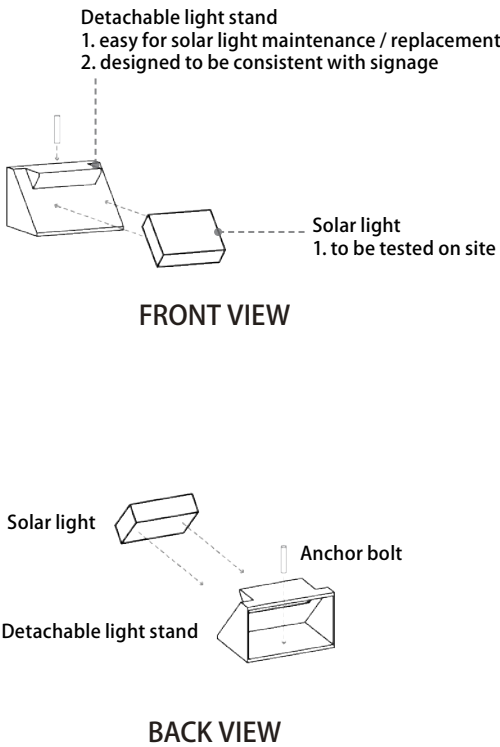


TYPE 4
(Reference existing solar light in the village)

SOLAR LIGHT for TYPE 1, 2 & 3



INSTALLATION for TYPE 2



6

村民／公眾參與活動 + 活化工程和長期保養工作

村民和公眾參與活化

帶人進入對話

教育活動

人氣

希望人會長期留, 而非過客



土磚工作坊



定期種植除草活動



舊物捐贈與修復